



# Lucky Peak Transmission Line Relicensing Joint Meeting

Sept. 5, 2025

10 am – 12 pm

- Andrea Courtney, Hydro Licensing Lead
- Josh Schultz, Resource Professional Leader (Water)
- Sarah Funk, Sr. Resource Professional (Botanical)
- Natalie Turley, Sr. Resource Professional (Wildlife)
- Fred Noland, Recreation Manager (Recreation)
- Alex Kroll, Resource Professional (Cultural & historical)

# Safety pointers

- Recording the meeting
- Exits
- 1221 W. Idaho Street
- Restrooms & water fountain

# Who and What is FERC?

Independent federal agency that regulates the interstate transmission of electricity, natural gas, and oil.

Exclusive authority to license non-federal hydropower and transmission projects under the Federal Power Act (30-50 year license terms).  
License defines operations, requirements, and conditions.



## Office of Energy Projects

- Division of Hydropower Licensing (DHL)
- Division of Hydropower Administration & Compliance (DHAC)
- Division of Dam Safety & Inspections (D2SI)

State and federal agencies and Native American Tribes have separate authorities independent of FERC but coordinated by FERC (i.e., ESA, CWA, NHPA).

# FERC Relicensing Process



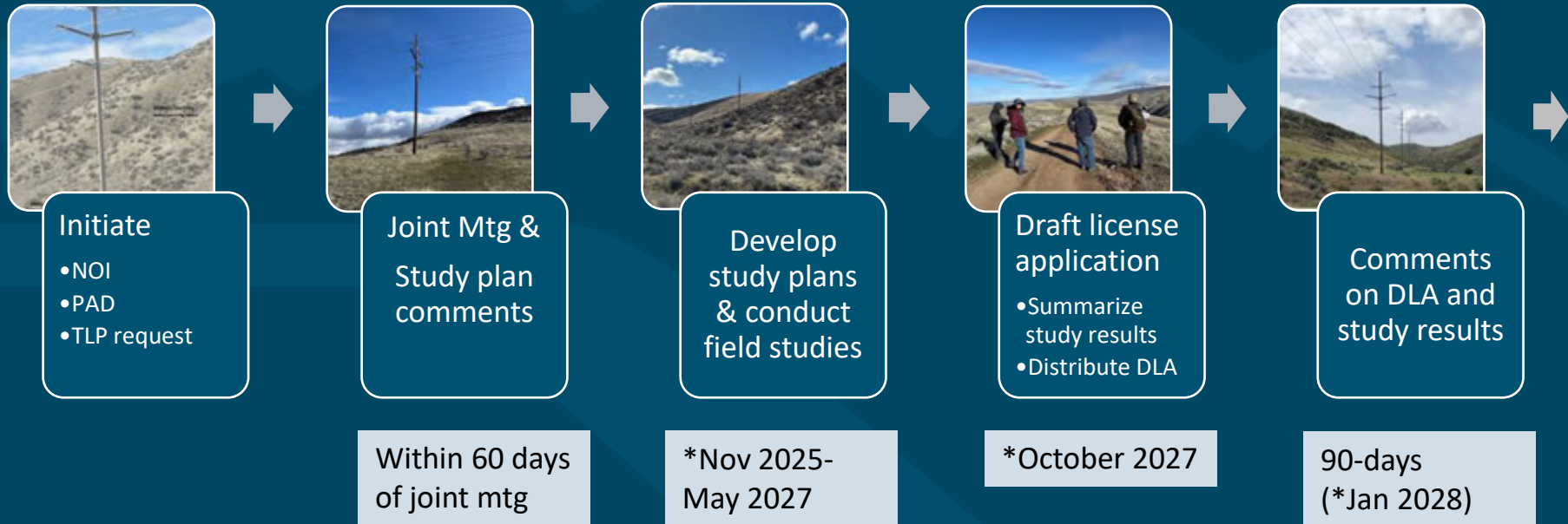
- Idaho Power requested to use the Traditional Licensing Process (TLP) with the filing of the Pre-Application Document (PAD) on May 30, 2025; FERC granted TLP request on July 16.
- 3-Stage consultation
  - Stage 1: Notice of Intent, PAD, Joint Meeting, and Interested Parties' comments/study requests
  - Stage 2: Completion of reasonable and necessary studies requested by Interested Parties; provide study results and develop Draft License Application (DLA) for Interested Parties' review and comment
  - Stage 3: File Final License Application (FLA) with FERC
- Post FLA: FERC follows NEPA process, consults with Interested Parties, issues new license.

# FERC Relicensing Process, cont.

- FLA Contents → the improved PAD or
- PAD = initial due diligence of FLA
  - Project description
  - Project operation
  - Environmental Analysis
  - Facilities Drawings
  - Maps and Boundaries



# Relicensing Timeline, generally



# Relicensing Timeline, cont.



File FLA  
5/30/2028



Current  
License expires  
5/30/2030



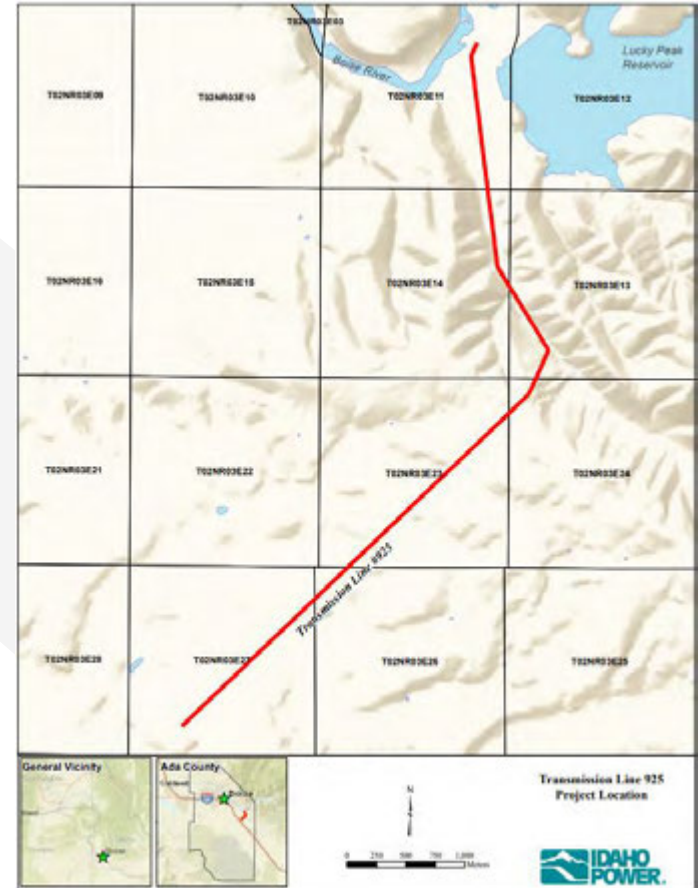
# Summary of PAD

- Project Overview and Location
- Water Resources
- Botanical
- Wildlife
- Recreation
- Cultural & Historical



# Overview and Location

- Ada County, ~10 miles SE of Boise
- 138-kV transmission line of ~4.5 miles
- Switchyard connecting Lucky Peak Power Plant to another Idaho Power transmission line
- Project boundary is line plus ROW
- No proposed changes to operation



# Water Resources

- Lydle Gulch
  - Seasonally dry
  - Unassessed
  - 3 line crossings
- Unnamed tributary to 5 Mile Creek
  - Seasonally dry
  - 1 line crossing



# Botanical Resources

## Land Cover

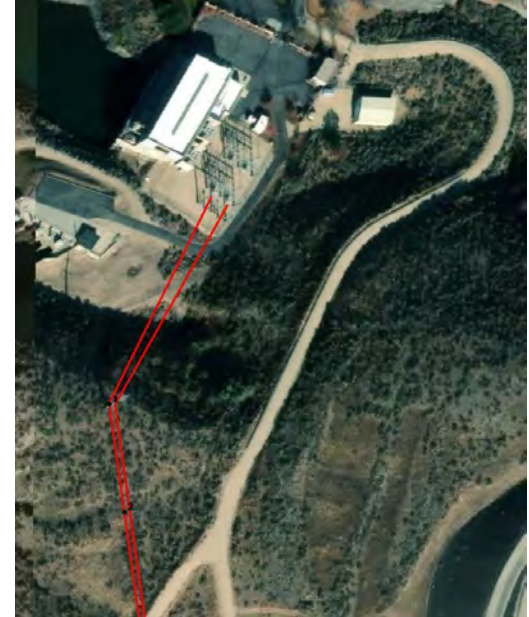
Scrub/Shrub 17.0 ac



Grassland/Herbaceous 15.5 ac



Developed Land 0.25 ac



# Botanical Resources

- Wetlands
  - Lydle Gulch intermittent water flow
- Noxious weeds
  - White top, rush skeletonweed
- No observed ESA-listed plants
- No plant ESA-critical habitat
- No special status plants





# Wildlife Resources

- Special Status Wildlife Species - 1 amphibian, 33 bird, 1 insect, and 1 mammal species occurrences within 1 mile of the project.
  - Bald and golden eagle observed within project boundary
- Transmission line built to APLIC guidelines
  - No instances of avian collisions or electrocutions

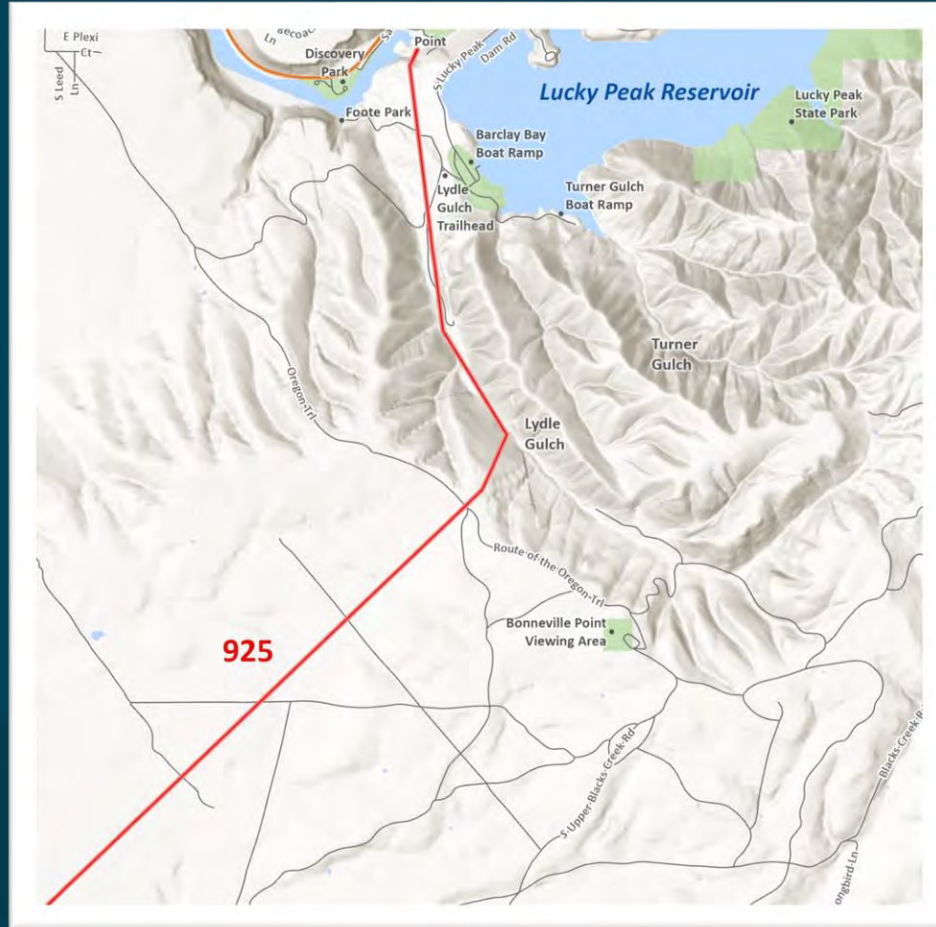


# Wildlife Resources

- 4 ESA-listed species identified in IPaC
- No ESA-critical habitat
- One monarch observation approximately 1000 ft from line
- No breeding habitat within project boundary

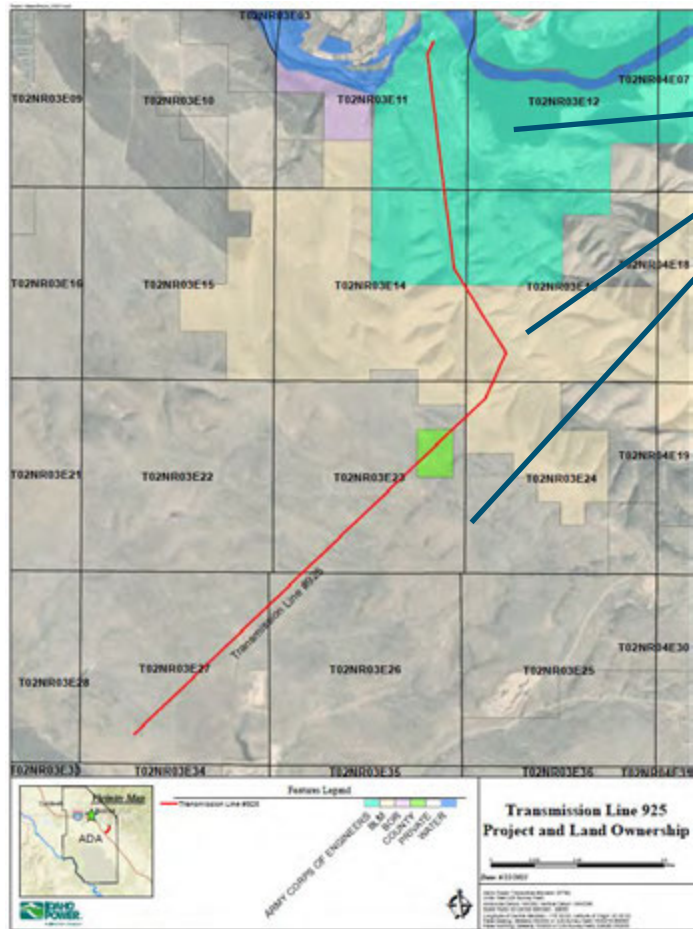


# Recreation & Access





# Access management by others is common



Multiple  
Jurisdictions

Compatible Uses

Hiking, Frisbee Golf,  
Wintering Big Game,  
Equestrian

Management of  
Access and  
Communication

Impacts addressed  
through:  
Methods of work,  
timing, and mitigation  
via permits.

# Future access in the ROW...



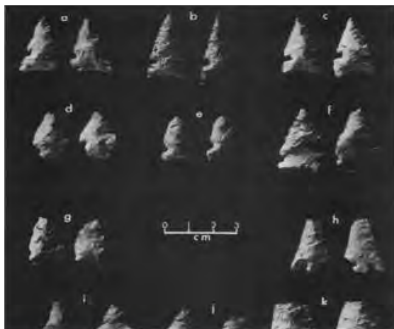
Line work safety  
and access is often  
aligned with  
primitive  
development

Maintenance or  
new construction  
will account for  
access



# Cultural & Historical Resources

- General Project Area Resources





# Cultural & Historical Resources

- Previous Cultural Studies
  - Woods (2024), 100% of Federal Lands within Project Boundary
- Historic Properties in Project Boundary
  - 10AA97
    - Pre-Contact Native American Lithic Scatter
  - 10AA121/955
    - Oregon Trail/Kelton Road/Goodale's Cutoff
  - 10AA7633
    - Lucky Peak Dam



# Cultural & Historical Resources

- Proposed Cultural Studies
  - 2.4 miles Private Land Class III Cultural Inventory
  - Pending ROE permission
  - Anticipated Spring 2026



# Interested Parties Discussion and Q&A



# Study Requests and Comments



- **Comments due on November 4, 2025** (send to Idaho Power &/or file with FERC)
- Written comments and study requests must reference **P-3104-010** and be sent to:

Andrea Courtney  
Hydro Licensing Lead  
Idaho Power Co.  
P.O. Box 70 (83707)  
1221 W. Idaho Street  
Boise, ID 83702  
208-388-2655

&/or

FERC eLibrary  
<http://www.ferc.gov>

[acourtney@idahopower.com](mailto:acourtney@idahopower.com)

# Comment and Study Request Requirements

- Identify necessary studies or information needed
- Identify basis for requested studies/information
- Discuss your understanding of the resource issues and your goals/objectives for the resource
- Explain why any recommended study methodology is more appropriate than other available methodologies
- Document that your recommended methodology is generally accepted
- Explain how the studies and information will be useful in furthering your resource goals/objectives

18 CFR § 16.8(b)(5)



# Wrap-up & Reminders

- Lucky Peak Transmission Line Relicensing Information:
  - FERC Docket Project No. P-3104-010
  - Idaho Power website [www.idahopower.com](http://www.idahopower.com) (search for relicensing)
- Distribution list
  - Contact Andrea Courtney [acourtney@idahopower.com](mailto:acourtney@idahopower.com) or (208)388-2655
- Comments due on **November 4, 2025** (send to Idaho Power and/or file with FERC)

## Current Projects in Relicensing

- ▶ American Falls Project
- ▶ Hells Canyon Complex (HCC) Projects
- ▼ Lucky Peak Transmission Line

Idaho Power is relicensing a transmission line, separate from a hydropower generating facility. The approximately 4.5 mile-long 138-kilovolt line was built and went into service in 1987, connecting the Lucky Peak Hydropower Facility (not owned or operated by Idaho Power) to another Idaho Power transmission line, southeast of the City of Boise and near the Lucky Peak Reservoir. If a transmission line delivers hydroelectric power from a power plant to the power grid, the Federal Energy Regulatory Commission (FERC) requires a license for that line, known as a primary line.

The current federal license for Idaho Power's Lucky Peak Transmission Line will expire on May 31, 2030.

On May 30, 2025, Idaho Power submitted a Notice of Intent (NOI), Pre-Application Document (PAD), and a Request to the Use the Traditional Licensing Process (Request) to FERC and interested parties, initiating the relicensing process.

Those documents [can be viewed here](#).

For questions about the relicensing process, contact Andrea Courtney, Hydro Licensing Leader, at [acourtney@idahopower.com](mailto:acourtney@idahopower.com) or 208-388-2655.

### Customer Service

Treasure Valley: 208-388-2323  
Toll Free: 1-800-488-6151

P.O. Box 70  
Boise, ID 83707

Idaho Power Payment Processing  
P.O. Box 5381

# Thank you.

