



Bogus Basin Recreation Area Goes 100% Renewable — Again!

Bogus Basin mountain north of Boise will use 100% renewable energy for the second consecutive year in 2021.

The nonprofit recreation area will buy renewable energy from Idaho Power, which is pursuing a goal of providing 100% clean energy by 2045. Bogus will buy locally generated renewable energy to cover 100% of its energy use this year.

“Sustainability is a key value for Bogus Basin and our guests,” Bogus Basin General Manager Brad Wilson said. “More and more of our customers are making efforts to reduce their own carbon footprints at home and at work, and they want us to do the same.”

Bogus has a long history of supporting renewable energy. From 2006 to 2020, the nonprofit participated in Idaho Power’s Green Power Program and Solar 4R Schools, an education program that teaches students about renewable energy. Bogus Basin is among a growing number of Idaho Power commercial customers who are committing to 100% clean energy.

In 2021, Bogus will buy 3,592 megawatt hours of renewable energy — comparable to removing 545 vehicles from the road, avoiding 5.6 million pounds of carbon dioxide (CO₂) emissions, or growing more than 42,000 tree seedlings for 10 years, according to the U.S. Environmental Protection Agency’s Greenhouse Gas Equivalencies Calculator.

“Bogus Basin has been a valued partner since skiers first started making the trek up Bogus Basin Road almost 80 years ago. We couldn’t be more excited about their leadership in renewable energy — and how it aligns with our own clean-energy goal.”

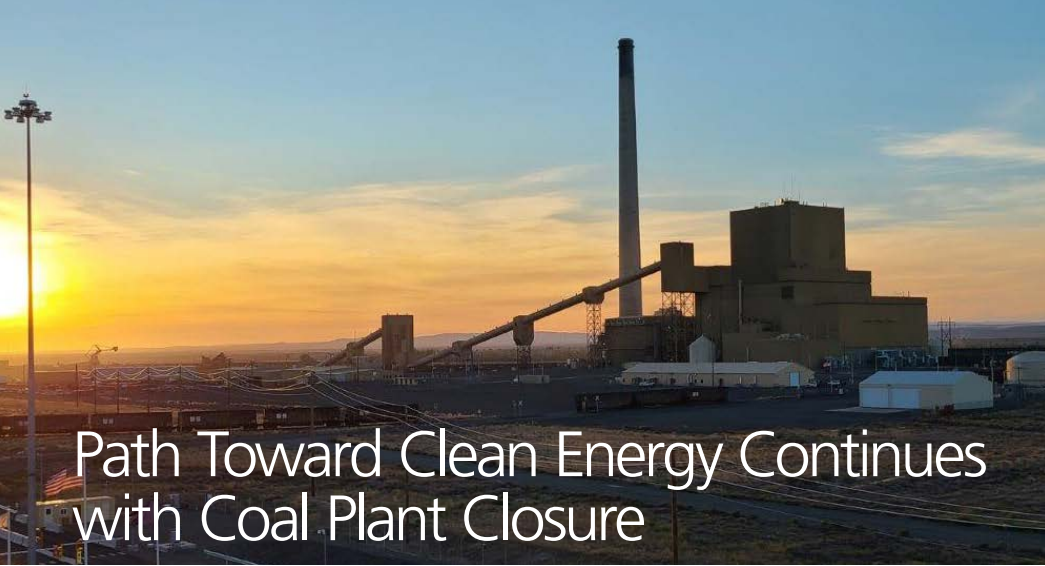
~ Brent Lulloff, Idaho Power Regional Manager

Buying 100% renewable energy is just one of the ways Bogus Basin is working to reduce its carbon footprint. Other

In addition to partnering on a clean energy future, Idaho Power is a proud supporter of Bogus Basin’s efforts to offer learn-to-ski scholarships for low-income kids and provide youth education and community outreach. Here, Bogus Basin General Manager Brad Wilson accepts a socially distanced donation from Idaho Power Regional Manager Brent Lulloff.

initiatives include an agreement with the City of Boise for a permanent park-and-ride lot at Fort Boise, a new public shuttle service from downtown, carpool benefits on holidays and weekends for vehicles carrying three or more people, and recycling dozens of tons of scrap metal.

Located 16.5 miles north of Boise, Bogus Basin Mountain Recreation Area opened in 1942. It is the largest nonprofit recreation area in the country, hosting more than 400,000 guests per year in the winter and summer for activities including skiing and snowboarding, tubing, hiking, mountain biking and riding a mountain coaster. Environmental education and community outreach programs serve more than 20,000 people every year. Want to learn more about powering your home or business with renewable energy? Check out available programs and options at idahopower.com/greenpower.



Path Toward Clean Energy Continues with Coal Plant Closure

When the Boardman, Oregon, coal-fired power plant shut down late last year, it marked another big step for Idaho Power as we move toward our goal of providing 100% clean energy by 2045.

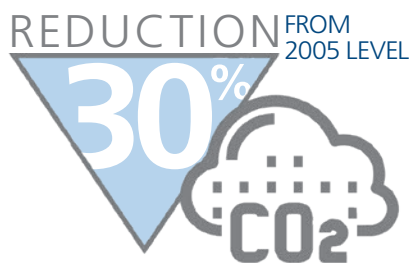
The company's transition away from coal will continue in the coming years as we exit our remaining coal-fired unit at the North Valmy Generating Station in Nevada and our four units at Jim Bridger in Wyoming. Idaho Power ended its participation in one Valmy unit in 2019, the Boardman plant in 2020, and other units will follow as early as next year.

Our current long-range plan envisions a full exit from coal-fired generation by 2030.

These moves are subject to approval by state regulators and agreements with our operating partners, but we are committed to a clean energy future that also ensures energy will remain reliable and affordable. We are currently exploring options for bringing in energy via the transmission corridor currently used by the North Valmy plant. We're moving ahead with the Boardman to Hemingway transmission project that will be a clean-energy pipeline to and from the Pacific Northwest.

The environmental benefits of replacing coal-based generation are accompanied by rapid changes in the regional and national energy marketplace that are making other options less costly. For example, Idaho Power has a contract to purchase energy from Idaho's largest solar plant, starting next year, at prices among the lowest in the industry.

Idaho Power thoroughly re-examines its 20-year energy plan every two years to ensure we are making the best choices for our customers in terms of cost, reliability and environmental responsibility. For more information about our long-range Integrated Resource Plan, visit idahopower.com/irp.



Carbon emissions intensity from our power plants — the amount of carbon produced per megawatt-hour of electricity — continues to decline.



Clean Together: Obendorf Farms

The Obendorf family has raised crops in western Idaho's Canyon County since the early 1900s. They've grown hops there for more than 70 years. This year, the Obendorfs are buying 100% clean energy through Idaho Power.

Obendorf Farms' commitment to clean energy aligns with its history of reducing environmental impacts through measures like growing cover crops to stabilize the soil and making energy efficiency upgrades to its irrigation system. It also aligns with Idaho Power's goal of providing 100% clean energy by 2045 — without compromising its more than 100-year-old tradition of reliable energy at affordable prices.

A recent video produced by Idaho Power describes the Obendorfs' history in the Treasure Valley and features brothers Brock and Phil Obendorf explaining why clean energy is so important to them, their family and their company. The video is available at youtube.com/idahopower.



From the Energy Efficient Kitchen

March 2021 Beverage

Green Kiwi-lime Smoothie

- 1 cup orange juice
- Juice from one lime
- 2 tbsp powdered sugar
- 1 banana, peeled and frozen
- 3 kiwis, peeled and frozen

Pour orange juice, lime juice and sugar into a blender and mix briefly. Add frozen banana and kiwi and blend until smooth. Add green food coloring for a festive St. Patrick's Day drink! Serve immediately. Makes two, one-cup servings.

Recipe selected from Idaho Power's Centennial Celebration Cookbook.

Interested in making your home or business 100% clean? Idaho Power offers a variety of clean-energy options for customers, including the Green Power program. Visit idahopower.com to learn more!

