

Meter Bases

General

This document identifies what meter bases meet, and do not meet, Idaho Power's requirements. All meter bases must be approved by Idaho Power.

Additional Customer Requirements

The specific requirements for new overhead or underground services can be found on Idaho Power's website at www.idahopower.com.

For help or additional information, contact Idaho Power:

In the Boise area: 208-388-2323
All other areas: 800-488-6151

Connection Requirements

Prior to Idaho Power connecting a service, all installations must meet Idaho Power's Service Requirements, and display the proper electrical inspection sticker certifying that the installation complies with the latest, adopted edition of the *National Electric Code*.

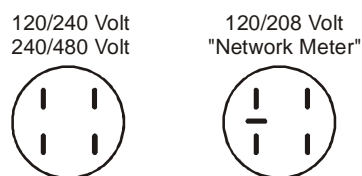
Meter Base Installation

Install meter bases per the manufacturer's instructions. For self-contained meter bases (400 amps and less), the customer's wiring is connected to the bottom or "load" terminal lugs in the base.

Standard Service Voltages

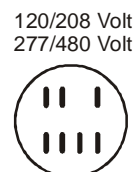
Single Phase (1-Ø) 120/240 volts
240/480 volts
120/208 volts ("network")

NOTE. Use the correct meter base for 1-Ø, 120/208 volt "network" applications.



**1-Ø Self-contained Meter
Lug Arrangements**

Three Phase (3-Ø) 120/208 volts
277/480 volts



**3-Ø Self-contained Meter
Lug Arrangements**

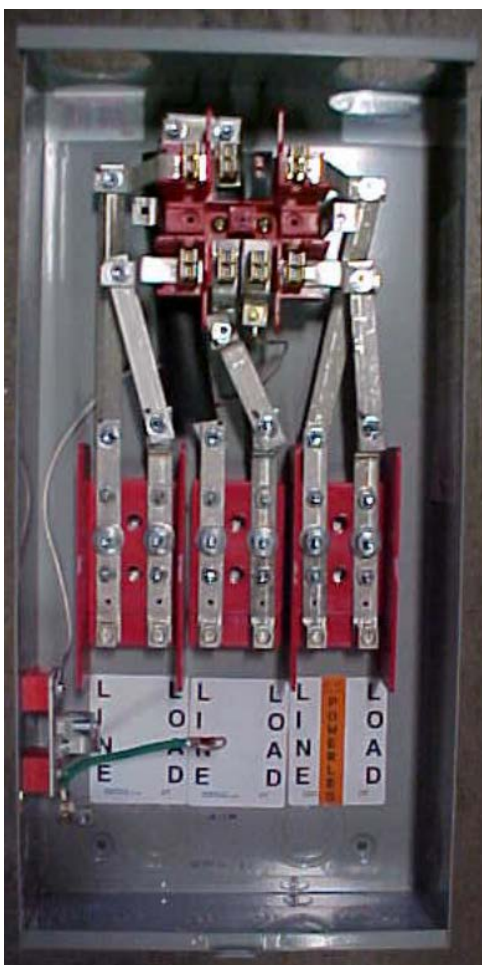
NOTE. 3-Ø, 120/240 and 240/480 volt services are for maintenance only and are not available for new construction, except for some small applications that must be approved in advance by Idaho Power.

Meter Base Identification

Accepted Meter Bases

3-Ø 100 or 200 Amp 480 Volt Meter Base. EUSERC-approved with “Safety Socket Test Bypass” meter bases are required on all newly installed 480 volt services up to 200 amps. The dimensions of the base and conductor/wire range in the 100A and 200A are the only physical differences between the two.

All 277/480 volt services, above 200 amp, will be metered with instrument (CT) transformers.



| No. of Term. | Type of Service | Connectors Cu/Al Line & Load | Dimensions D" x W" x H" |
|----------------|-----------------|------------------------------|-------------------------|
| 100 Amp | | | |
| 7 | OH/UG | #6-1/0 | 4-5/8"x12"x25" |
| 200 Amp | | | |
| 7 | OH/UG | #1/0-250 kcmil | 6"x14"x30" |

3-Ø 100 or 200 Amp 208 Volt Meter Base. EUSERC-approved with or without “Safety Socket Test Bypass” meter bases are accepted on all newly installed 208 volt services up to 200 amps.

All 120/208 volt services, above 200 amp, will be metered with instrument (CT) transformers.



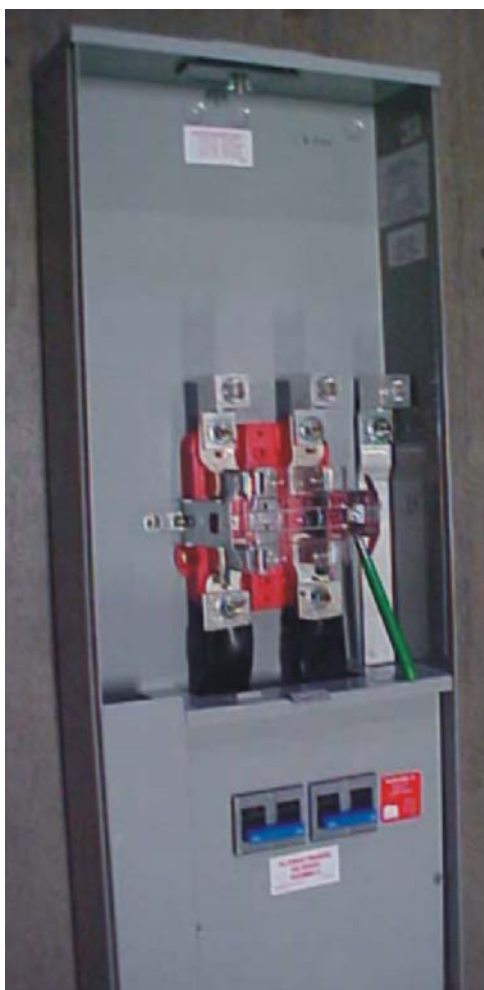
NOTE.

- ◆ “Safety Socket Test Bypass” are the only link bypass meter bases approved.
- ◆ Lever bypass meter bases are not approved.
- ◆ Locking jaw non-bypass meter bases are approved for applications that do not require a “Safety Socket Test bypass” meter base. (See above).
- ◆ 400 amp bypass meter bases are not approved.
- ◆ 400 amp meter base installations must seal with one meter seal. Some ring type bases will require a cover interlock device before they are approved for installation. Check with the manufacturer before purchase.
- ◆ “Safety Socket Test Bypass” meter bases are approved for 200 amp services where voltage is less than 480 volts, but they are not required.

Meter Base Identification

1-Ø 320 Amp, 120/240 Volt Meter Base with 2-200 Amp Breakers. Locking jaw non-bypass meter bases are approved for applications that do not require a “Safety Socket Test bypass” meter base.

All 120/240 volt services, above 400 amp, will be metered with instrument (CT) transformers.



1-Ø, 100 or 200 Amp 480 Volt Meter Base. EUSERC-approved with “Safety Socket Test Bypass” meter bases are required on all newly installed 480 volt services up to 200 amps.

All 240/480 volt services, above 200 amp, will be metered with instrument (CT) transformers.

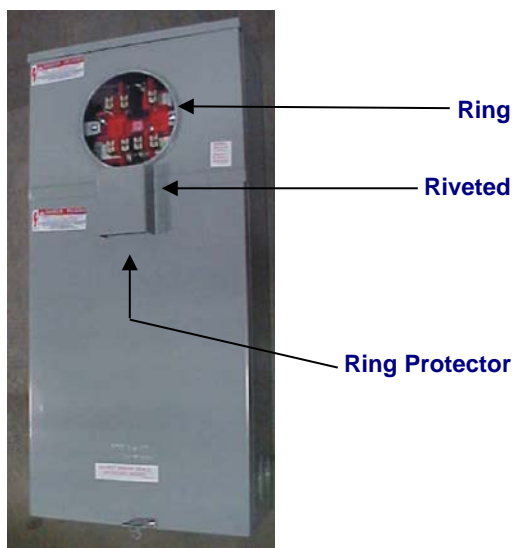
| No. of Term. | Type of Service | Connectors Cu/Al Line & Load | Dimensions D" x W" x H" |
|----------------|-----------------|------------------------------|-------------------------|
| 320 Amp | | | |
| 4 | OH/UG | #1/0-250 MCM | 5"x15"x42-1/2" |

Meter Base Identification

Meter Base Enclosures

These meter bases must have an interlocking device, a screw-type meter ring, and be capable of being sealed by Idaho Power.

All **3-Ø 100 or 200 Amp 480 Volt** “Safety Socket Test Bypass” meter bases must seal with one meter seal. Some ring type bases will require a cover interlock device before they are approved for installation. **Check with the manufacturer before purchase.**



All **3-Ø 100 or 200 Amp 120/208 Volt** meter bases must seal with one meter seal. Some ring type bases will require a cover interlock device before they are approved for installation. **Check with the manufacturer before purchase.**



All **1-Ø 320 Amp, 120/240 Volt** meter bases must seal with one meter seal and accept 3" conduit. Some ring type bases will require a cover interlock device before they are approved for installation. These meter bases must not have a link bypass or a lever bypass. Locking jaws are acceptable. **Check with the manufacturer before purchase.**



NOTE. Any other configurations not mentioned in this document shall be addressed by your local Idaho Power Meter Department.

Photos are of Milbank products but are not exclusive as long as specified criteria is met as stated in this document.

A special thanks to Roger at Graybar, Mike at Interstate Electric Supply of Boise, Idaho, and Milbank Manufacturing Company for letting us use their products in this document.