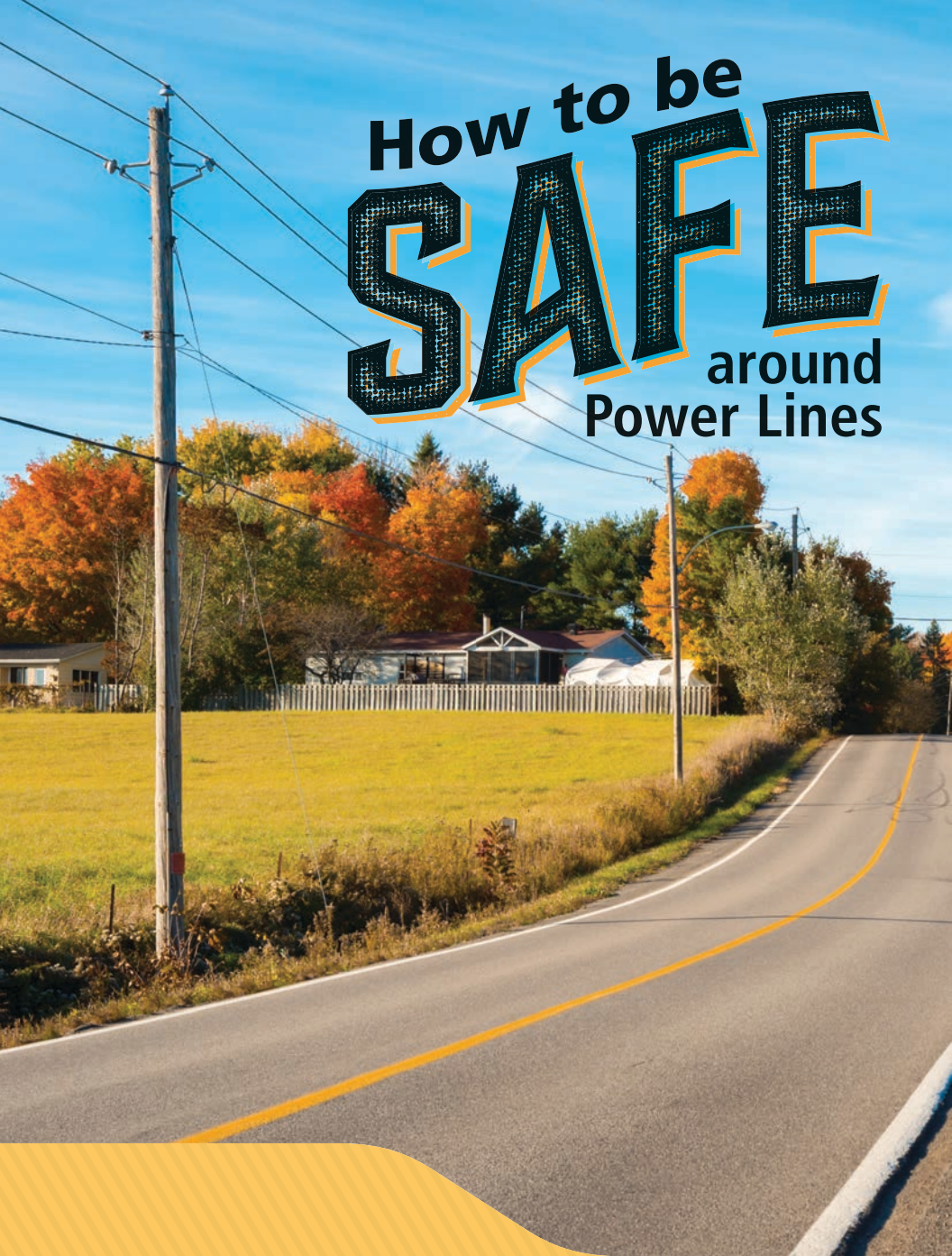


How to be **SAFE** around Power Lines



**IDAHO
POWER®**

An IDACORP Company



Knowledge about
ELECTRICITY could
save your life.

Idaho Power keeps power lines high in the air or buried in the ground because they can be dangerous. The information in this brochure is especially important if you work near power lines. It includes safety precautions you should take to prevent serious or fatal injuries from electrical accidents. Please take a moment to read the following safety tips.

The 10-FOOT Rule

Occupational Safety and Health Administration (OSHA) regulations and Idaho's Overhead Line Safety Act require contractors, workers and their tools to stay at least 10 feet away from overhead power lines of 50,000 volts (50 kilovolts [kV]) or less while working. If you don't, not only are you placing yourself and possibly others in danger, but you are breaking the law and could be fined.

If the equipment must operate within 10 feet of lines, Idaho Power must be consulted about proper safety precautions before starting work. The lines can be de-energized and grounded, or other protective measures can be taken.

If the voltage on the line you are working near is higher than 50,000 volts, keep a wider distance.

▶	50-kV	to	200-kV	▶	15 feet
▶	200-kV	to	350-kV	▶	20 feet
▶	350-kV	to	500-kV	▶	25 feet
▶	500-kV	to	750-kV	▶	35 feet
▶	750-kV	to	1,000-kV	▶	45 feet

Higher voltages can be difficult to recognize. If you suspect the line is higher than 50,000 volts, take these extra precautions:

- Check with your boss or the job superintendent. They should know the voltages of lines near heavy equipment or other employee work areas.
- Contact Idaho Power at 208-388-2200 and request assistance. An Idaho Power representative can determine the voltage of any lines in your area.



UNDERGROUND Lines

Digging into underground power lines can be just as dangerous as contacting an overhead line. Underground electrical lines and gas pipelines are everywhere. Contact with them may be fatal; therefore, the best thing to do is make sure there is no danger.

Before digging or making a hole, you are legally required to locate underground public utilities, such as electricity, gas, water, drainage or communications. You can do so by calling Digline at 811. You must give Digline at least two days' notice, and no more than 10 days' notice.

TREES Near Lines

If you notice a tree interfering with power lines, do not trim the tree yourself. Call Idaho Power at 208-388-2323 or 1-800-488-6151 outside the Treasure Valley. Idaho Power hires qualified line-clearing contractors to safely prune trees near lines.

— If Contact Occurs —

If contact with a line does occur, follow these guidelines:

- If you're on the ground, stay on the ground — and stay away. Coming close to the energized object increases the danger.
- If you're in your vehicle or equipment, stay put. This is your safest option until help arrives.
- If you must leave the vehicle because of fire or another life-threatening situation, JUMP with both feet together out of the vehicle. Do not touch the vehicle with any part of your body and the ground at the same time. Shuffle your feet, keeping both feet together, until you are at least 100 feet safely away.
- If a line has fallen on the ground or on another object or piece of equipment, always assume it is energized. Stay clear, keep others away and contact Idaho Power at 208-388-2323.
- Keep a safe distance from any victim who is in direct contact with electricity. Call 911 immediately! Do not try to touch the victim because you may be electrocuted.





FARM AND RANCH Work and Overhead Lines

Electricity always tries to go to the ground. It is silent and can be fatal. It may be conducted through metal, water, trees and even people. Some people mistakenly believe electricity takes only one path to ground; actually, electricity takes all paths to the ground.

To avoid serious accidents or death, always stay alert. Remember:

- Check for overhead power lines before lifting tall objects, such as irrigation pipes, or clearing debris from pipes.
- Carry pipes or tall objects horizontally.
- Never stack or store materials, such as hay bales under overhead power lines. The location of heavy equipment should be planned in consultation with Idaho Power.
- Do not spray water on power lines or equipment.
- Do not attach signs or equipment to power poles.
- Always look for electrical lines that may interfere with your work.
- Do not take risks. Carefully watch what you are doing and have a spotter on hand to ensure equipment does not come close to overhead lines.
- Keep farm machinery away from power lines, poles and guy wires (the support cables for power poles). If you strike a guy wire or pole, contact our Customer Service Center at 208-388-2323 or 1-800-488-6151 outside the Treasure Valley. You may have weakened the structure or created slack in the line.

SAFE Work Habits

The best way to avoid injury from power lines is to make a personal commitment to safety. Rules, regulations and safety reminders are useless unless they're observed.

Your commitment to safety should be consistent and ongoing, and it should be based on the following principle: No building, equipment, deadline or profit is worth a human life.

For information and for safety assistance around power lines, call

208-388-2323

or 1-800-488-6151 outside the Treasure Valley.





P.O. Box 70 (83707)
1221 W. Idaho St.
Boise, ID 83702

idahopower.com