



FOOTHILLS TO EMMETT

TRANSMISSION LINE UPGRADE

WELCOME TO OUR PROJECT OPEN HOUSE

We're glad you're here! Thank you for attending this evening. Idaho Power representatives invite you to learn more about the project through this short presentation.

We welcome your questions, comments, and feedback.



WHAT WE'LL COVER

Project Need, Area & Description

Proposed Structures

Landowner Communications

Construction Process

Right-of-Way Access

Vegetation Management

Working in Communities

Safety During Construction

Public Involvement

Schedule

How to Reach Us



PROJECT NEED

The 75-year-old, 138-kilovolt transmission line needs to be rebuilt. Newer, stronger, more modern equipment will help us to continue providing reliable energy to customers and growing communities in Ada and Gem counties.

Community benefits:

- Improved reliability and resiliency
- Better resistance to wildfires
- Meeting growing energy demand
- Modern technologies for a smarter electric system



PROJECT AREA



Ada County
Gem County

Boise
Eagle
Emmett

The Mesa
The Highlands
Hidden Springs



PROJECT DESCRIPTION

- Upgrade 35-mile, 138-kV single circuit transmission line between the Boise River and the Emmett Substation
- Remove and replace existing wood poles and wires with weathered steel poles and upgraded wire
- Add shield wire for lightning protection – will increase existing pole heights an average of 10 to 15 feet
- Use H-frame structures to replace poles in a straight line and three-pole structures when the line changes direction
- Use guy wires to support angle structures when the line is under tension

PROPOSED STRUCTURE



- **Fire-resistant**, weathered steel H-frame structures
- **138-kV** single-circuit
- **700-foot** average distance between structures
- **60 to 80 feet** average height

Engineering constraints caused by terrain or easement restrictions could influence placement of some structures. Replacement structures will be located as closely as possible to existing locations.



LANDOWNER COMMUNICATIONS

Idaho Power will communicate with landowners, residents and the community early and often to keep you informed of project progress and what to expect in advance.

We will share information by...

- idahopower.com/foothills-emmett
- project milestone mailers
- email newsletters
- HOA preferred methods of sharing information
- in-person visit with an Idaho Power representative



CONSTRUCTION PROCESS

PRE-CONSTRUCTION | CONSTRUCTION | RESTORATION

- Obtain permits
- Perform field assessments, surveys, soil borings, staking
- Trim or remove vegetation to prepare right-of-way
- Install environmental controls, access roads, construction entrances
- Remove old wire and structures
- Assemble and erect structures and string new wire
- Energize upgraded transmission line
- Restore rights-of-way and repair areas affected by construction



RIGHT-OF-WAY ACCESS

We access power lines from public roads, private easements and other approved means. Most access roads are lightly used for routine line inspections and maintenance. We might need to reinforce some access roads to accommodate construction equipment.

We'll work with landowners to minimize disturbances to their properties. We will contact landowners in advance if access complications arise.

Let us know if your property might present access complications. We can schedule time to meet with you there.



VEGETATION MANAGEMENT

Safe, reliable operation of the grid relies on keeping tree limbs and other vegetation away from the transmission line.

Outages can occur when trees grow too close to the line or become airborne in high winds.

Before we start work, we will evaluate growth potential of trees and other vegetation in or near Idaho Power easements. We'll contact landowners before trimming, pruning or removing any vegetation on their land.

Visit idahopower.com/trees for details on vegetation management.



WORKING IN COMMUNITIES

Idaho Power will work with local governments, businesses, HOAs and landowners to minimize disruptions like temporary road and trail closures, construction noise and traffic.

We will:

- Work within hours that comply with local guidelines
- Work in multiple areas at a time to reduce construction time
- Collaborate with public works, transportation and recreation agencies to provide traffic and trail management



SAFETY DURING CONSTRUCTION

Safety is at the core of everything we do. Here's what you can expect.

Safety practices:

- Conduct daily safety briefings before work begins
- Communicate traffic disruptions with signs or flaggers
- Clearly mark active work areas
- Reduce speeds in school zones and neighborhoods
- Make equipment and materials deliveries during off-peak hours



PUBLIC INVOLVEMENT

Please join us at our public open house.

Information provided during the meeting can be found on the project webpage. There is not a formal presentation – so please attend anytime during the hours listed below.

Thursday, June 16

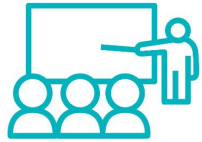
5:30 – 7:30 p.m.

Idaho Power Auditorium

1221 West Idaho Street, Boise, Idaho 83702



SCHEDULE



Spring 2022 –
Late 2025

Fall 2022 –
Fall 2023

Fall 2023

Early 2024*

Early 2024 –
Late 2025*

Late 2025

Public Involvement

Permitting

Pre-Construction

Vegetation
Management

Construction

Restoration

* Activities are subject to begin earlier



HOW TO REACH US

Idaho Power is committed to open dialogue with landowners, providing consistent updates and project information, and creating opportunities for the community to provide feedback and ask questions.

Sven Berg

Idaho Power Communications

sberg@idahopower.com

208.388.2905

Website: idahopower.com/foothills-emmett