

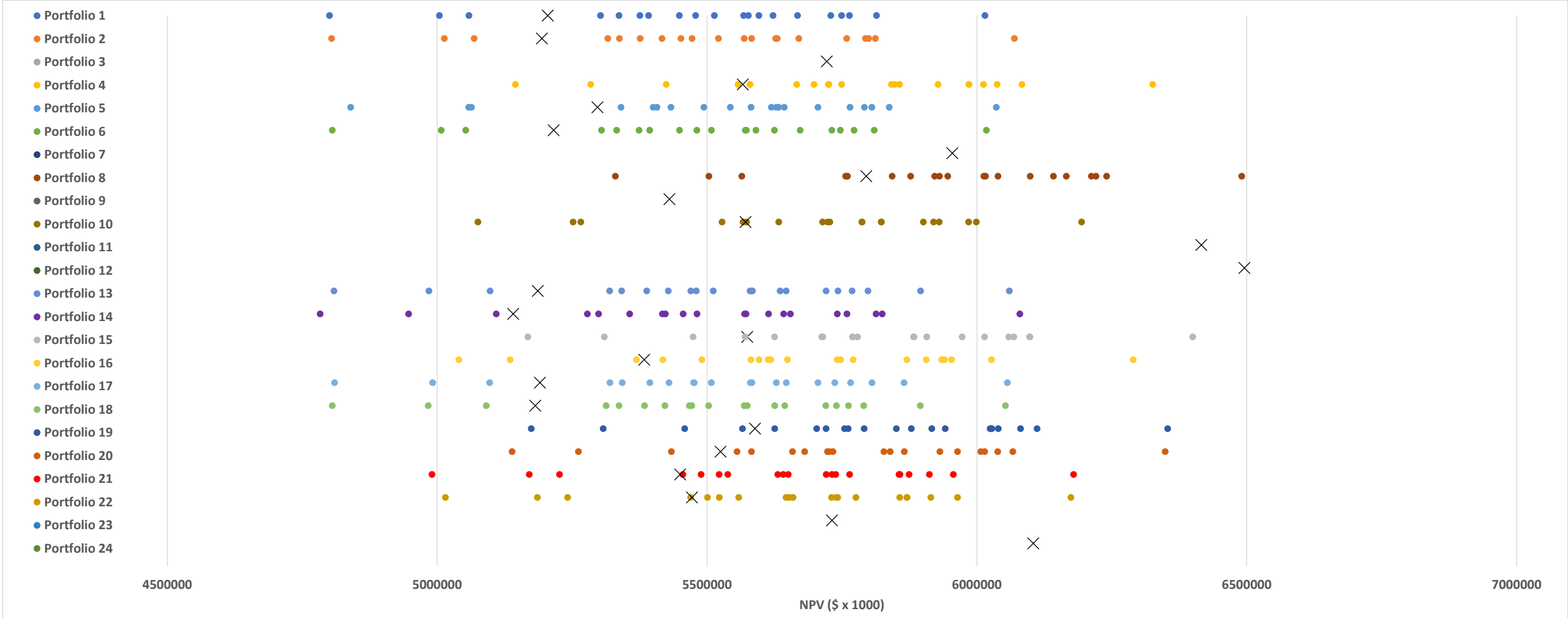
# Idaho Power 2019 IRP Aurora Portfolio Results Summary 2019-2038 in \$000

Natural Gas >>> Carbon >>>	Planning Zero	Planning Planning	Planning Generation	Planning High	Mid Zero	Mid Planning	Mid Generation	Mid High	High Zero	High Planning	High Generation	High High
NPV 9.59% Discount Rate	Portfolio 1	Portfolio 2	Portfolio 3	Portfolio 4	Portfolio 5	Portfolio 6	Portfolio 7	Portfolio 8	Portfolio 9	Portfolio 10	Portfolio 11	Portfolio 12
NPV PGPC Difference from Low	64,188	53,023	580,877	425,320	156,211	74,794	813,592	654,047	289,509	430,453	1,274,796	1,354,763
Portfolio PGPC \$ Rank 1-24	6	5	18	14	8	7	21	20	10	15	23	24
Planning Gas - Planning Carbon	\$5,204,987	\$5,193,822	\$5,721,676	\$5,566,119	\$5,297,010	\$5,215,593	\$5,954,391	\$5,794,846	\$5,430,308	\$5,571,252	\$6,415,595	\$6,495,562
High Gas - Planning Carbon	\$5,838,271	\$5,912,498	\$6,210,619	\$6,103,940	\$5,814,202	\$5,833,030	\$6,346,565	\$6,237,979	\$5,888,100	\$5,898,554	\$6,704,850	\$6,815,126
Planning Gas - High Carbon	\$6,764,047	\$6,584,945	\$6,547,671	\$6,330,257	\$7,122,079	\$6,758,198	\$6,602,341	\$6,470,846	\$7,066,371	\$7,073,438	\$6,940,999	\$7,116,717
High Gas - High Carbon	\$7,694,476	\$7,498,159	\$7,061,325	\$6,897,190	\$8,003,831	\$7,648,289	\$6,996,029	\$6,959,605	\$7,859,693	\$7,730,128	\$7,241,029	\$7,543,175
Portfolio Scenerio \$ Rank 1-24												
Planning Gas - Planning Carbon	6	5	18	14	8	7	21	20	10	15	23	24
High Gas - Planning Carbon	3	6	17	13	1	2	21	20	4	5	23	24
Planning Gas - High Carbon	11	8	7	1	19	10	9	3	16	17	14	18
High Gas - High Carbon	14	11	4	1	20	13	3	2	18	15	9	12
Planning Gas - Planning Carbon												
Variable Costs PGPC 20 years	\$4,001,632	\$3,921,344	\$3,318,514	\$3,446,248	\$4,082,916	\$3,978,101	\$3,200,302	\$3,327,418	\$3,911,101	\$3,724,058	\$3,063,028	\$3,169,208
Variable Costs Rank	17	15	4	7	19	16	3	5	14	11	1	2
Fixed Costs NPV 20 years	\$1,203,355	\$1,272,478	\$2,403,163	\$2,119,871	\$1,214,094	\$1,237,492	\$2,754,089	\$2,467,427	\$1,519,207	\$1,847,194	\$3,352,567	\$3,326,354
Fixed Costs Rank	5	8	19	18	6	7	22	20	11	14	24	23
Purchases MWh over 20 years	24,779,004	18,039,004	16,370,429	19,577,716	25,682,354	24,686,951	16,587,669	16,815,676	18,649,126	17,208,156	17,084,400	24,666,690
Purchases % of Total Load	7.0%	5.1%	4.6%	5.5%	7.2%	6.9%	4.7%	4.7%	5.2%	4.8%	4.8%	6.9%
Sales MWh	(18,644,081)	(22,758,767)	(36,110,881)	(31,333,868)	(17,857,373)	(18,613,507)	(39,951,448)	(40,097,516)	(24,748,167)	(30,533,938)	(46,388,836)	(32,954,566)
Emissions CO2 tons - Generation Resources Only 20 year total	74,453,885	71,956,956	49,083,911	46,550,742	82,964,789	73,268,537	45,908,517	47,898,199	81,544,409	79,178,469	41,568,603	37,287,226

# Idaho Power 2019 IRP Aurora Portfolio Results Summary 2019-2038 in \$000

Natural Gas >>> Carbon >>>	Planning Zero	Planning Planning	Planning Generation	Planning High	Mid Zero	Mid Planning	Mid Generation	Mid High	High Zero	High Planning	High Generation	High High
NPV 9.59% Discount Rate	Portfolio 13	Portfolio 14	Portfolio 15	Portfolio 16	Portfolio 17	Portfolio 18	Portfolio 19	Portfolio 20	Portfolio 21	Portfolio 22	Portfolio 23	Portfolio 24
NPV PGPC Difference from Low	45,626	-	433,568	242,783	49,427	40,896	447,913	384,045	309,521	331,119	590,615	963,709
Portfolio PGPC \$ Rank 1-24	3	1	16	9	4	2	17	13	11	12	19	22
Planning Gas - Planning Carbon	\$5,186,425	\$5,140,799	\$5,574,367	\$5,383,582	\$5,190,226	\$5,181,695	\$5,588,712	\$5,524,844	\$5,450,320	\$5,471,918	\$5,731,414	\$6,104,508
High Gas - Planning Carbon	\$5,950,205	\$ 5,967,392	\$ 6,217,075	\$ 6,128,204	\$5,945,183	\$ 5,943,126	\$ 6,189,823	\$ 6,182,985	\$5,936,749	\$ 5,921,624	\$ 6,222,490	\$ 6,573,322
Planning Gas - High Carbon	\$7,153,750	\$ 6,833,200	\$ 6,536,474	\$ 6,410,119	\$7,203,879	\$ 7,156,143	\$ 6,507,612	\$ 6,531,144	\$7,312,706	\$ 7,278,465	\$ 7,014,498	\$ 6,843,126
High Gas - High Carbon	\$8,055,579	\$ 7,812,743	\$ 7,223,380	\$ 7,183,363	\$8,100,650	\$ 8,052,905	\$ 7,151,883	\$ 7,229,309	\$8,063,504	\$ 7,992,783	\$ 7,736,676	\$ 7,308,401
Portfolio Scenerio \$ Rank 1-24												
Planning Gas - Planning Carbon	3	1	16	9	4	2	17	13	11	12	19	22
High Gas - Planning Carbon	11	12	18	14	10	9	16	15	8	7	19	22
Planning Gas - High Carbon	20	12	6	2	22	21	4	5	24	23	15	13
High Gas - High Carbon	22	17	7	6	24	21	5	8	23	19	16	10
Planning Gas - Planning Carbon												
Variable Costs PGPC 20 years	\$4,333,271	\$ 4,259,717	\$ 3,676,801	\$ 3,802,172	\$4,356,020	\$ 4,335,496	\$ 3,623,944	\$ 3,708,718	\$4,108,356	\$ 4,058,975	\$ 3,812,631	\$ 3,354,899
Variable Costs Rank	22	21	9	12	24	23	8	10	20	18	13	6
Fixed Costs NPV 20 years	\$ 853,153	\$ 881,082	\$ 1,897,565	\$ 1,581,410	\$ 834,206	\$ 846,199	\$ 1,964,768	\$ 1,816,126	\$ 1,341,964	\$ 1,412,943	\$ 1,918,782	\$ 2,749,609
Fixed Costs Rank	3	4	15	12	1	2	17	13	9	10	16	21
Purchases MWh over 20 years	43,650,614	47,895,946	32,410,608	34,676,713	47,488,834	44,818,077	31,040,525	33,093,594	33,273,832	32,196,939	36,771,714	25,345,619
Purchases % of Total Load	12.3%	13.5%	9.1%	9.7%	13.3%	12.6%	8.7%	9.3%	9.4%	9.0%	10.3%	7.1%
Sales MWh	(10,136,808)	(9,602,142)	(19,025,895)	(16,772,925)	(9,159,816)	(9,660,878)	(21,634,185)	(18,834,671)	(15,629,092)	(15,992,566)	(16,618,476)	(29,465,065)
Emissions CO2 tons - Generation Resources Only 20 year total	69,048,140	59,449,442	41,668,817	41,418,466	67,825,212	68,394,084	40,771,048	42,607,865	73,448,758	72,195,832	52,709,660	39,134,922

# Portfolio Risk/Stochastic Analysis



MW	Portfolio 1 (Planning NG, Zero Carbon)					Portfolio 2 (Planning NG, Planning Carbon)					Portfolio 3 (Planning NG, Generational Carbon)						Portfolio 4 (Planning NG, High Carbon)							
	Gas	Solar	Battery	Retirement		Gas	Solar	Battery	DR	Retirement	Gas	Wind	Solar	Battery	DR	Retirement	Gas	Wind	Solar	Battery	DR	Retirement		
2019	0	0	0	0	-127	0	0	0	0	0	-127	0	0	0	0	0	-127	0	0	0	0	0	-127	
2020	0	0	0	0	-58	0	0	0	0	0	-58	0	0	0	0	0	-58	0	0	0	0	0	-58	
2021	0	0	0	0	0	0	0	0	0	0	0	0	0	0	0	0	0	0	0	0	0	0	0	
2022	0	120	0	0	-177	0	120	0	0	0	-177	0	0	240	30	0	-177	0	0	120	0	0	-177	
2023	0	100	0	0	0	0	100	0	0	0	0	0	0	180	20	5	0	0	0	100	0	5	0	
2024	0	0	0	0	0	0	0	0	0	0	0	0	100	0	0	5	-180	300	0	0	0	0	-180	
2025	0	40	30	0	-133	0	0	0	0	0	-133	0	100	600	20	5	-133	0	0	160	30	5	-133	
2026	56	0	0	0	0	0	80	50	0	0	0	0	100	80	30	5	0	111	100	240	30	5	-174	
2027	111	0	0	0	0	0	80	20	0	0	0	0	100	80	0	0	0	0	100	160	20	5	0	
2028	0	0	0	0	0	300	0	0	0	0	0	300	100	0	0	0	-177	300	100	40	0	0	-177	
2029	0	80	20	0	0	0	0	0	0	0	0	300	100	0	0	0	-174	0	100	360	0	0	0	
2030	0	40	20	0	0	300	0	0	0	0	-177	0	0	0	0	5	0	0	100	5	0	0	0	
2031	300	0	0	0	0	0	0	0	0	0	0	0	0	5	0	5	0	0	100	0	0	5	0	
2032	111	0	0	0	0	0	0	0	0	0	0	300	0	0	0	5	0	0	0	5	0	5	0	
2033	0	0	0	0	0	300	0	0	0	0	-354	0	0	0	0	5	0	0	0	0	0	5	0	
2034	0	0	0	0	-531	56	0	0	0	0	0	0	0	0	0	0	0	111	0	0	0	0	5	0
2035	522	0	0	0	0	111	0	0	0	0	0	111	0	0	0	0	0	0	0	0	0	0	0	0
2036	0	0	0	0	0	0	0	0	0	0	0	0	0	0	0	0	0	56	0	0	0	0	0	0
2037	0	0	0	0	0	300	0	0	0	0	0	56	0	0	0	5	0	56	0	0	0	0	0	0
2038	56	0	0	0	0	0	0	0	0	0	0	111	0	0	0	5	0	56	0	0	0	0	5	0
Nameplate	1,155	380	70	0	-1,026	1,367	380	70	0	0	-1,026	1,178	600	1,185	100	50	-1,026	989	600	1,190	80	50	-1,026	
<b>Total*</b>	<b>579</b>					<b>791</b>						<b>2,087</b>						<b>1,883</b>						
MW	Portfolio 13 (Planning NG, Zero Carbon, B2H)					Portfolio 14 (Planning NG, Planning Carbon, B2H)					Portfolio 15 (Planning NG, Generational Carbon, B2H)						Portfolio 16 (Planning NG, High Carbon, B2H)							
	Gas	Solar	Battery	Retirement		Gas	Solar	Battery	DR	Retirement	Gas	Wind	Solar	Battery	DR	Retirement	Gas	Wind	Solar	Battery	DR	Retirement		
2019	0	0	0	0	-127	0	0	0	0	0	-127	0	0	0	0	0	-127	0	0	0	0	0	-127	
2020	0	0	0	0	-58	0	0	0	0	0	-58	0	0	0	0	0	-58	0	0	0	0	0	-58	
2021	0	0	0	0	0	0	0	0	0	0	0	0	0	0	0	0	0	0	0	0	0	0	0	
2022	0	0	0	0	-177	0	120	0	0	0	-177	0	0	200	0	0	-177	0	0	120	0	0	-177	
2023	0	0	0	0	0	0	100	0	0	0	0	0	0	140	0	5	0	0	0	100	0	5	0	
2024	0	0	0	0	0	0	0	0	0	0	0	0	100	160	0	5	0	56	0	0	0	0	-180	
2025	0	0	0	0	-133	0	0	0	0	0	-133	0	100	160	0	5	-133	111	0	40	0	5	-133	
2026	0	0	0	0	0	0	0	0	5	0	-174	111	100	40	0	5	-354	0	0	0	0	5	-174	
2027	0	0	0	0	0	0	0	0	0	0	0	0	100	0	0	5	0	0	100	160	0	5	0	
2028	0	0	0	0	0	111	0	0	0	0	0	300	0	0	0	5	-177	300	100	0	0	0	-177	
2029	0	0	0	0	0	0	0	0	5	0	0	0	0	240	30	5	0	0	100	80	0	0	0	
2030	0	0	0	0	0	111	0	0	5	0	0	0	100	0	0	5	0	0	100	45	30	0	0	
2031	0	0	0	0	0	0	0	0	5	0	0	0	0	120	10	5	0	0	100	365	30	0	0	
2032	0	0	0	0	0	0	0	0	5	0	0	0	0	0	0	0	0	0	100	40	10	0	0	
2033	0	0	0	0	0	0	0	0	5	0	0	0	0	0	0	0	0	0	0	40	0	0	0	
2034	300	0	0	0	-531	0	45	30	5	0	-357	0	0	0	0	0	0	0	0	0	0	5	0	
2035	300	80	50	0	0	300	40	20	5	0	0	0	100	0	0	0	0	0	0	0	0	5	0	
2036	0	80	20	0	0	0	0	0	5	0	0	0	0	0	0	0	0	0	0	0	0	5	0	
2037	0	0	0	0	0	0	40	10	0	0	0	56	0	40	20	0	0	0	0	160	10	5	0	
2038	300	0	0	0	0	300	0	0	5	0	0	0	0	80	20	5	0	0	0	40	0	5	0	
Nameplate	900	160	70	0	-1,026	822	345	60	50	0	-1,026	467	600	1,180	80	50	-1,026	467	600	1,190	80	50	-1,026	
B2H (2026)	500					500						500						500						
<b>Total with B2H*</b>	<b>604</b>					<b>751</b>						<b>1,851</b>						<b>1,861</b>						

\*Does not include increases in transmission import capability associated with unit retirements.

MW	Portfolio 5 (Mid NG, Zero Carbon)						Portfolio 6 (Mid NG, Planning Carbon)						Portfolio 7 (Mid NG, Generational Carbon)						Portfolio 8 (Mid NG, High Carbon)						
	Gas	Solar	Battery	DR	Retirement		Gas	Solar	Battery	DR	Retirement		Gas	Wind	Solar	Battery	DR	Retirement		Gas	Wind	Solar	Battery	DR	Retirement
2019	0	0	0	0	-127		0	0	0	0	-127		0	0	0	0	0	-127		0	0	0	0	0	-127
2020	0	0	0	0	-58		0	0	0	0	-58		0	0	0	0	0	-58		0	0	0	0	0	-58
2021	0	0	0	0	0		0	0	0	0	0		0	0	0	0	0	0		0	0	0	0	0	0
2022	0	0	0	0	0		0	120	0	0	-177		0	100	640	10	0	-177		0	0	160	30	0	-177
2023	0	100	0	5	0		0	100	0	0	0		0	100	140	30	5	0		0	100	140	0	5	0
2024	0	0	0	5	0		0	0	0	5	0		0	100	400	40	5	-180		300	0	0	0	5	-180
2025	0	0	0	5	-133		0	0	0	5	-133		111	100	0	0	5	-133		0	100	440	20	5	-133
2026	0	0	0	5	0		0	120	40	5	0		300	100	0	0	5	-174		0	100	325	10	5	-174
2027	0	40	30	5	0		111	0	0	5	0		0	0	0	0	5	0		300	100	40	0	5	0
2028	0	40	20	5	0		0	0	0	5	0		300	0	0	0	5	-177		0	100	40	10	5	-177
2029	111	0	0	5	0		0	80	30	5	0		0	100	0	0	5	0		0	100	0	0	5	0
2030	0	0	0	5	0		300	0	0	0	0		0	0	5	0	0	0		300	0	0	0	5	0
2031	0	80	20	5	0		0	0	0	0	0		0	0	5	0	0	0		0	0	40	10	0	0
2032	0	85	10	5	0		111	0	0	0	0		0	0	0	0	5	0		0	0	5	0	0	0
2033	56	0	0	0	0		0	0	0	0	0		300	0	0	0	0	0		0	0	0	0	0	0
2034	300	0	0	0	-708		0	40	0	0	-531		0	0	0	0	0	0		0	0	0	0	0	0
2035	637	0	0	0	0		470	0	0	5	0		56	0	0	0	0	0		0	0	0	0	0	0
2036	0	0	0	0	0		0	80	10	5	0		0	0	0	0	0	0		0	0	0	0	0	0
2037	111	0	0	0	0		56	40	0	5	0		56	0	0	0	0	0		167	0	0	0	0	0
2038	0	0	0	0	0		56	0	0	5	0		0	0	0	0	0	0		0	0	0	0	5	0
Nameplate	1,214	345	80	50	-1,026		1,103	580	80	50	-1,026		1,122	600	1,190	80	40	-1,026		1,067	600	1,190	80	45	-1,026
<b>Total*</b>	<b>663</b>						<b>787</b>						<b>2,006</b>							<b>1,956</b>					
MW	Portfolio 17 (Mid NG, Zero Carbon, B2H)						Portfolio 18 (Mid NG, Planning Carbon, B2H)						Portfolio 19 (Mid NG, Generational Carbon, B2H)						Portfolio 20 (Mid NG, High Carbon, B2H)						
	Gas	Solar	Battery	DR	Retirement		Gas	Solar	Battery	DR	Retirement		Gas	Wind	Solar	Battery	DR	Retirement		Gas	Wind	Solar	Battery	DR	Retirement
2019	0	0	0	0	-127		0	0	0	0	-127		0	0	0	0	0	-127		0	0	0	0	0	-127
2020	0	0	0	0	-58		0	0	0	0	-58		0	0	0	0	0	-58		0	0	0	0	0	-58
2021	0	0	0	0	0		0	0	0	0	0		0	0	0	0	0	0		0	0	0	0	0	0
2022	0	0	0	0	-177		0	0	0	0	-177		0	100	280	30	0	-177		0	0	0	0	0	-177
2023	0	0	0	5	0		0	0	0	0	0		0	0	140	0	5	0		0	100	180	0	0	0
2024	0	0	0	0	0		0	0	0	0	0		0	100	0	0	5	-180		0	100	0	0	0	0
2025	0	0	0	0	-133		0	0	0	0	-133		0	100	0	0	5	-133		0	100	0	0	0	-133
2026	0	0	0	0	0		0	0	0	0	0		0	100	0	0	5	-174		0	0	0	0	0	-174
2027	0	0	0	0	0		0	0	0	0	0		0	100	0	0	5	0		300	0	0	0	0	-180
2028	0	0	0	0	0		0	0	0	0	0		0	100	0	0	5	0		0	100	240	40	0	-177
2029	0	0	0	0	0		0	0	0	0	0		300	0	0	0	5	-177		0	100	40	0	0	0
2030	0	0	0	0	0		0	0	0	0	0		0	0	400	0	5	0		0	100	405	10	0	0
2031	0	0	0	0	0		0	0	0	0	0		0	0	120	0	5	0		0	0	45	0	0	0
2032	0	0	0	0	0		0	0	0	0	0		300	0	0	0	5	0		0	0	40	0	0	0
2033	0	0	0	0	0		0	0	0	5	0		0	0	40	10	0	0		0	0	40	10	5	0
2034	0	40	20	5	-531		300	0	0	5	-531		0	0	120	20	0	0		0	0	0	0	5	0
2035	467	120	50	5	0		300	80	20	5	0		0	0	85	20	0	0		0	0	0	0	5	0
2036	56	0	0	5	0		0	80	0	5	0		0	0	0	0	0	0		300	0	0	0	5	0
2037	300	0	0	5	0		0	40	30	5	0		0	0	0	0	0	0		0	0	0	0	5	0
2038	0	0	0	5	0		0	80	20	5	0		0	0	0	0	0	0		300	0	0	0	5	0
Nameplate	822	160	70	30	-1,026		600	280	70	30	-1,026		600	600	1,185	80	50	-1,026		900	600	990	60	30	-1,026
B2H (2026)	500						500						500							500					
<b>Total with B2H*</b>	<b>556</b>						<b>454</b>						<b>1,989</b>							<b>2,054</b>					

\*Does not include increases in transmission import capability associated with unit retirements.

MW	Portfolio 9 (High NG, Zero Carbon)							Portfolio 10 (High NG, Planning Carbon)						Portfolio 11 (High NG, Generational Carbon)							Portfolio 12 (High NG, High Carbon)								
	Gas	Wind	Solar	Battery	DR	Retirement		Gas	Wind	Solar	Battery	DR	Retirement		Gas	Wind	Solar	Battery	Biomass	DR	Retirement		Gas	Wind	Solar	Battery	PS	Biomass	DR
2019	0	0	0	0	0	0	-127	0	0	0	0	0	-127	0	0	0	0	0	0	0	-127	0	0	0	0	0	0	0	-127
2020	0	0	0	0	0	0	-58	0	0	0	0	0	-58	0	0	0	0	0	0	0	-58	0	0	0	0	0	0	0	-58
2021	0	0	0	0	0	0	0	0	0	0	0	0	0	0	0	0	0	0	0	0	0	0	0	0	0	0	0	0	0
2022	0	0	0	0	0	0	0	0	0	0	0	0	0	0	100	640	30	0	0	0	-177	0	100	520	30	0	0	0	-177
2023	0	0	100	0	0	0	0	0	0	100	0	0	0	0	100	260	0	0	0	5	0	0	100	340	0	0	0	0	0
2024	0	0	40	0	0	0	0	0	0	40	30	0	0	0	200	280	50	0	0	5	-180	0	0	160	35	0	0	0	0
2025	0	0	40	20	0	0	-133	0	0	80	30	0	-133	0	200	0	0	0	0	5	-133	0	100	85	10	0	0	0	-313
2026	0	0	40	10	0	0	0	0	0	160	20	0	0	300	200	5	0	0	0	5	-174	0	200	40	0	500	0	0	-174
2027	0	0	200	10	0	0	0	0	0	320	0	0	0	0	200	0	0	0	0	5	0	0	200	0	0	0	0	0	0
2028	0	0	40	10	0	0	0	0	0	120	0	0	0	300	0	0	0	0	0	5	-177	0	100	0	5	0	30	0	-177
2029	0	0	200	0	0	0	0	0	0	40	0	0	0	0	0	0	0	0	0	5	0	0	0	0	0	0	0	0	0
2030	0	0	0	0	0	0	0	0	100	5	0	0	0	0	0	0	0	0	0	5	0	300	0	0	0	0	0	0	0
2031	300	0	0	0	0	0	0	0	100	0	0	0	0	0	0	5	0	0	0	5	0	0	0	0	0	0	0	0	0
2032	0	0	0	0	0	0	0	0	100	205	0	0	0	0	0	0	0	0	0	30	0	0	200	40	10	0	30	0	0
2033	0	0	120	0	0	0	0	111	0	0	0	5	0	0	0	0	10	30	0	0	0	0	100	0	0	0	30	0	0
2034	300	0	0	0	0	0	-708	300	100	0	0	5	-708	0	100	0	5	30	0	0	0	0	0	0	0	0	0	0	0
2035	637	0	40	0	0	0	0	467	100	0	0	5	0	300	100	0	0	0	0	0	0	0	100	5	0	0	0	5	0
2036	0	0	0	0	0	0	0	300	100	0	0	5	0	0	0	0	0	0	0	0	0	0	0	0	0	0	0	0	0
2037	111	0	0	0	0	0	0	0	0	0	0	5	0	0	0	0	0	30	0	0	0	0	0	0	0	30	0	0	0
2038	111	0	0	0	0	0	0	0	0	0	0	5	0	111	0	0	10	0	0	5	0	411	0	0	0	0	0	0	0
Nameplate Total*	1,459	0	820	50	0	0	-1,026	1,178	600	1,070	80	30	-1,026	1,011	1,200	1,190	105	150	50	-1,026	711	1,200	1,190	90	500	120	5	-1,026	
	<b>1,303</b>							<b>1,932</b>						<b>2,680</b>								<b>2,790</b>							

MW	Portfolio 21 (High NG, Zero Carbon, B2H)						Portfolio 22 (High NG, Planning Carbon, B2H)						Portfolio 23 (High NG, Generational Carbon, B2H)							Portfolio 24 (High NG, High Carbon, B2H)										
	Gas	Wind	Solar	Battery	DR	Retirement		Gas	Wind	Solar	Battery	DR	Retirement		Gas	Wind	Solar	Battery	Biomass	DR	Retirement		Gas	Wind	Solar	Battery	PS	Biomass	DR	Retirement
2019	0	0	0	0	0	0	-127	0	0	0	0	0	-127	0	0	0	0	0	0	0	0	-127	0	0	0	0	0	0	0	-127
2020	0	0	0	0	0	0	-58	0	0	0	0	0	-58	0	0	0	0	0	0	0	0	-58	0	0	0	0	0	0	0	-58
2021	0	0	0	0	0	0	0	0	0	0	0	0	0	0	0	0	0	0	0	0	0	0	0	0	0	0	0	0	0	0
2022	0	0	0	0	0	0	0	0	0	0	0	0	0	0	0	0	0	0	0	0	0	0	100	520	30	0	0	0	0	-177
2023	0	0	0	0	0	0	0	0	0	0	0	5	0	0	0	0	0	0	0	0	0	0	100	100	0	0	0	0	0	0
2024	0	0	0	0	0	5	0	0	0	0	0	5	0	0	0	0	0	0	0	0	0	0	200	320	20	0	0	5	-180	
2025	0	0	0	0	0	5	-133	0	0	0	0	5	-133	0	0	0	0	0	0	0	0	-133	0	200	0	0	0	0	5	-133
2026	0	0	0	0	0	5	0	0	0	0	0	5	0	0	0	0	0	0	0	0	0	-174	0	100	40	0	0	0	5	-174
2027	0	0	0	0	0	5	0	0	0	0	0	5	0	0	0	0	0	0	0	0	0	0	200	0	0	0	0	5	0	0
2028	0	0	0	0	0	5	0	0	0	0	0	5	0	0	200	480	30	0	0	0	-177	300	0	0	0	0	0	5	-177	
2029	0	0	0	0	0	5	0	0	0	0	0	5	0	0	200	360	60	0	0	0	0	0	100	0	0	0	0	0	0	0
2030	0	0	80	0	0	5	0	0	0	80	0	5	0	0	200	40	0	0	0	0	0	0	111	0	5	0	0	0	0	0
2031	0	0	120	0	0	5	0	0	100	480	0	5	0	0	200	0	0	0	0	0	0	0	0	80	30	0	0	0	0	0
2032	0	100	200	0	0	5	0	0	100	80	20	5	0	0	200	0	0	0	0	0	0	0	0	0	0	0	0	0	0	0
2033	0	100	200	10	0	0	0	0	100	120	30	0	0	0	100	0	0	0	0	5	0	0	0	0	0	0	0	0	0	0
2034	56	100	120	10	0	0	-708	0	100	80	20	0	-708	0	0	0	0	0	0	5	-357	0	0	0	0	0	0	0	0	0
2035	356	100	205	0	0	0	0	411	100	85	0	0	0	300	0	0	0	0	0	5	0	0	0	0	0	0	0	5	0	0
2036	0	100	40	10	0	0	0	0	100	0	0	0	0	300	0	0	0	0	0	5	0	300	0	0	0	0	0	5	0	0
2037	300	100	0	0	0	0	0	300	0	0	0	0	0	0	0	0	0	0	0	5	0	0	0	85	10	0	0	5	0	0
2038	222	0	0	0	0	5	0	0	0	40	10	0	0	300	0	0	0	0	0	5	0	0	0	0	0	0	0	5	0	0
Nameplate B2H (2026)	933	600	965	30	50	0	-1,026	711	600	965	80	50	-1,026	900	1,100	880	90	0	0	30	-1,026	711	1,000	1,150	90	0	0	45	-1,026	
<b>Total with B2H*</b>	<b>500</b>							<b>500</b>						<b>500</b>								<b>500</b>								
	<b>2,052</b>							<b>1,880</b>						<b>2,474</b>								<b>2,470</b>								

\*Does not include increases in transmission import capability associated with unit retirements.