

# Western Treasure Valley Electrical Plan Update

## Welcome

Jim Burdick  
Engineering Leader  
Idaho Power



# Eastern Idaho Electrical Plan Update

## Meeting No. 3



# Meeting No. 3 Agenda

- 10:00 a.m. – Welcome
- 10:05 a.m. – Substation Connections & Reliability Criteria
- 10:50 a.m. – Small Mapping Groups
- 12:00 p.m. – Lunch
- 12:30 p.m. – Small Mapping Groups
- 1:45 p.m. – Small Group Reporting and Wrap up
- 2:00 p.m. – Adjourn



# Western Treasure Valley Electrical Plan Update

## Distribution Substation Mapping Orientation

Dakota Pfaff  
Technical Lead Engineer  
Idaho Power



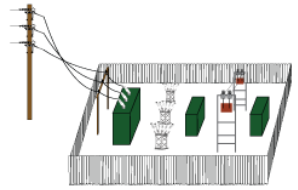
# 2022 WTVEP Update

## Buildout Requirements



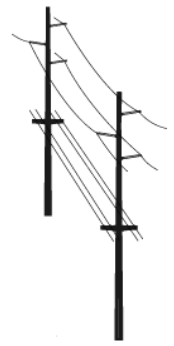
High Voltage Transmission

Minimum Two Lines Per Source Substation

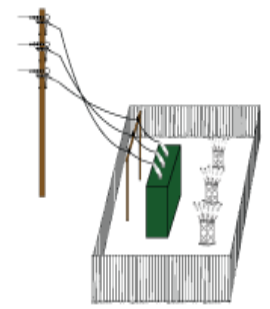


Source Substations

Four New Source Substations



138 kV Transmission



Distribution Substations

Nineteen New Distribution Substations

# Mapping Orientation

- See Appendix A in the WTVEP Update 2022 Meeting No. 2 Reference Guide

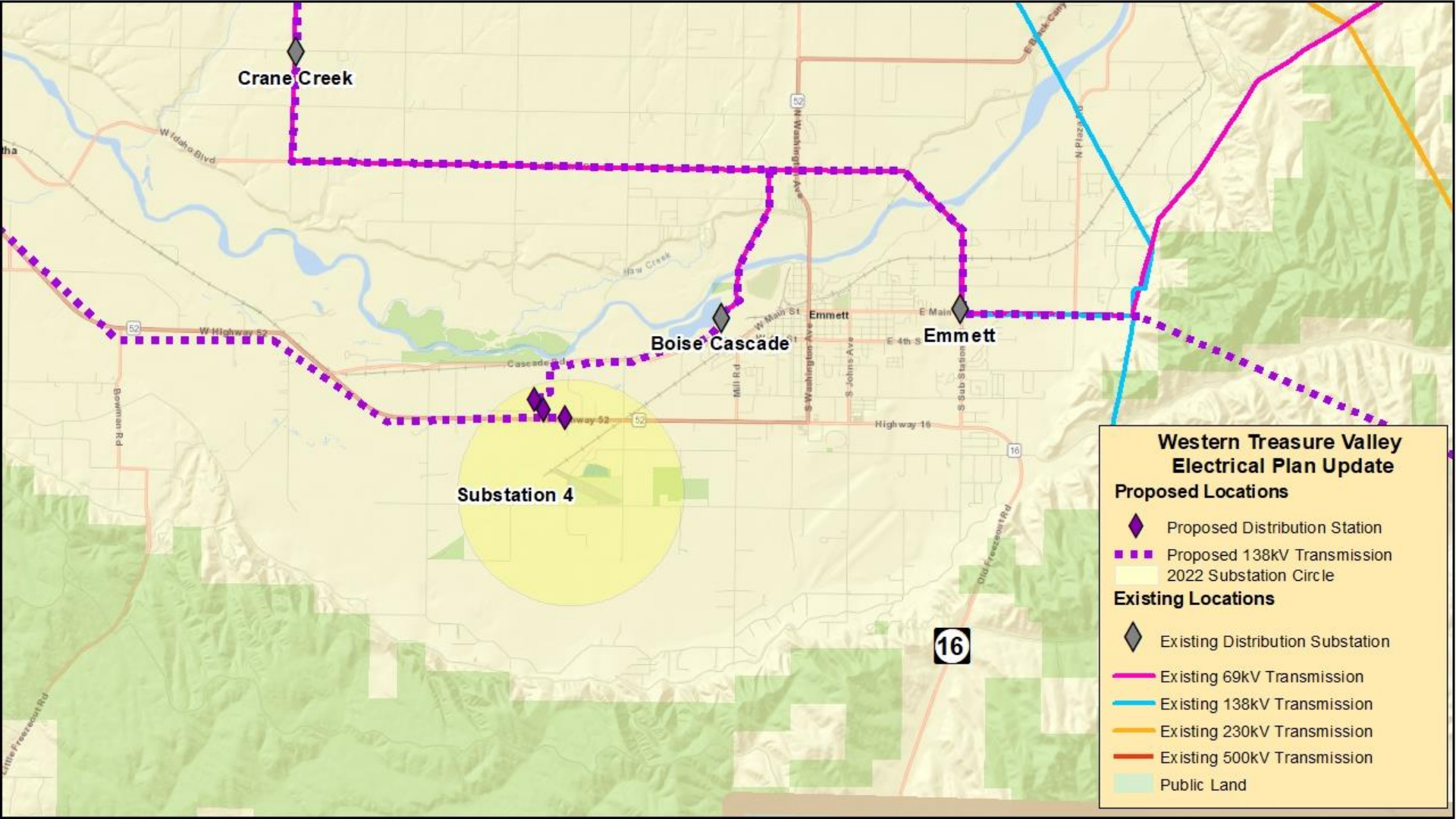
# Committee Mapping Goal

- Propose a single preferred site for each future source substation, distribution substation and connecting transmission lines
  - Identify alternative sites

# Mapping Step 3

- Confirm or adjust 2011 WTVEP **distribution substation** sites.
  - Six substation locations to confirm or revise.





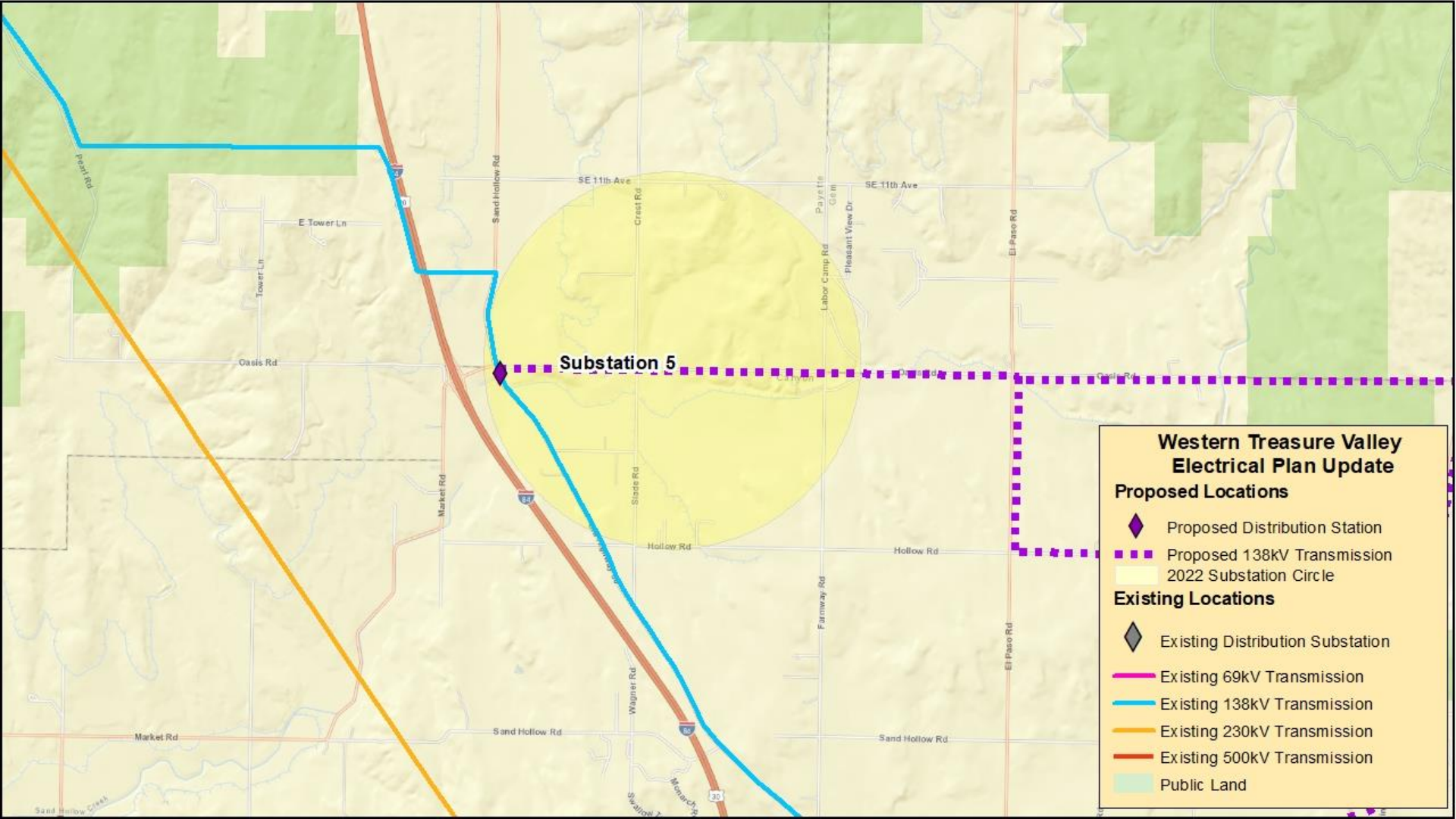
### Western Treasure Valley Electrical Plan Update

**Proposed Locations**

- ◆ Proposed Distribution Station
- Proposed 138kV Transmission
- 2022 Substation Circle

**Existing Locations**

- ◆ Existing Distribution Substation
- Existing 69kV Transmission
- Existing 138kV Transmission
- Existing 230kV Transmission
- Existing 500kV Transmission
- Public Land



**Substation 5**

**Western Treasure Valley  
Electrical Plan Update**

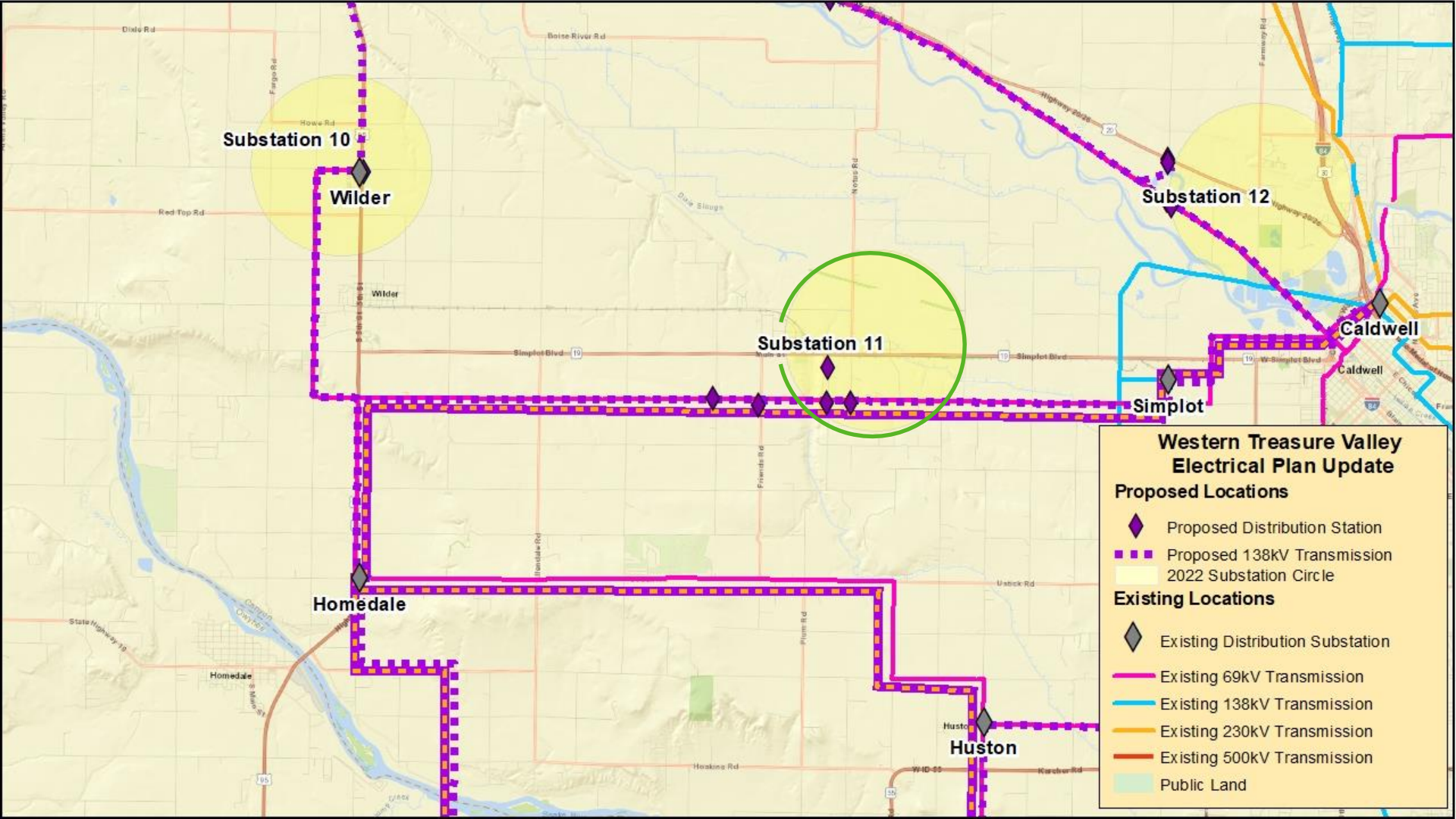
**Proposed Locations**

- ◆ Proposed Distribution Station
- ▬▬▬ Proposed 138kV Transmission
- 2022 Substation Circle

**Existing Locations**

- ◆ Existing Distribution Substation
- ▬ Existing 69kV Transmission
- ▬ Existing 138kV Transmission
- ▬ Existing 230kV Transmission
- ▬ Existing 500kV Transmission
- Public Land





Substation 10

Wilder

Substation 11

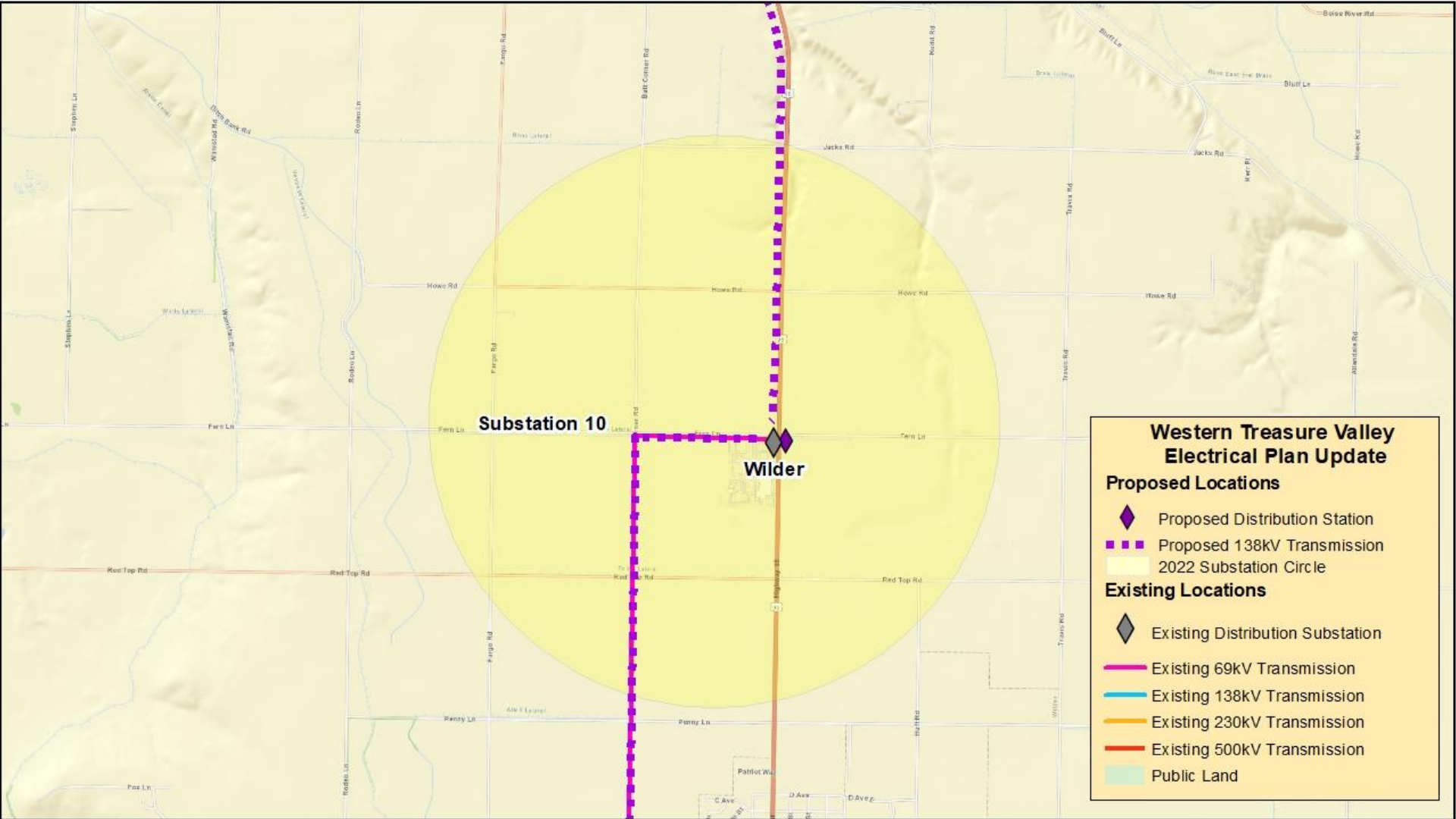
Substation 12

Caldwell

Simplot

Homedale

Huston



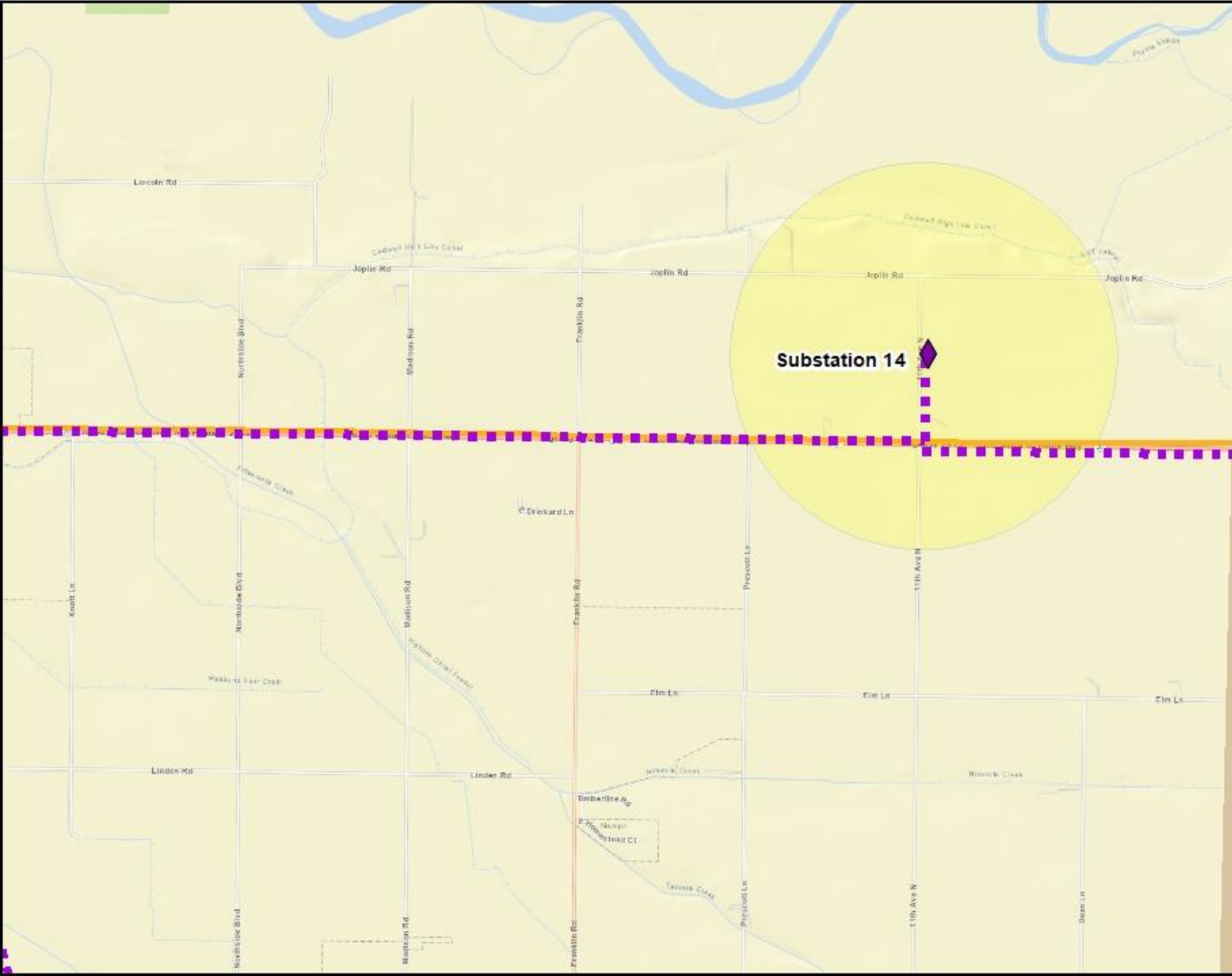
## Western Treasure Valley Electrical Plan Update

### Proposed Locations

- ◆ Proposed Distribution Station
- ▬▬▬ Proposed 138kV Transmission
- 2022 Substation Circle


### Existing Locations

- ◆ Existing Distribution Substation
- ▬ Existing 69kV Transmission
- ▬ Existing 138kV Transmission
- ▬ Existing 230kV Transmission
- ▬ Existing 500kV Transmission
- Public Land




### Western Treasure Valley Electrical Plan Update

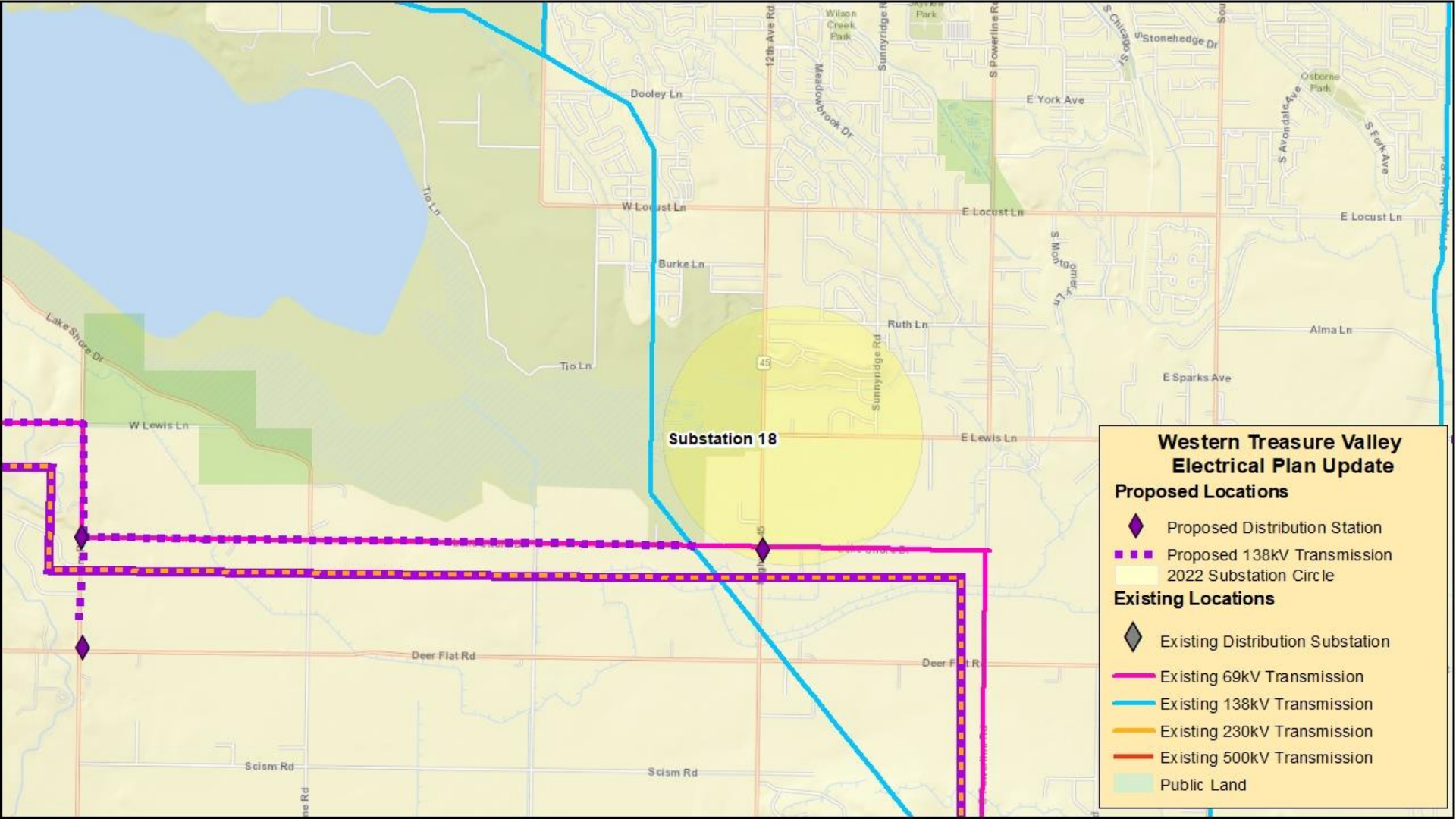
**Proposed Locations**

-  Proposed Distribution Station
-  Proposed 138kV Transmission
-  2022 Substation Circle

**Existing Locations**

-  Existing Distribution Substation
-  Existing 69kV Transmission
-  Existing 138kV Transmission
-  Existing 230kV Transmission
-  Existing 500kV Transmission
-  Public Land





### Western Treasure Valley Electrical Plan Update

**Proposed Locations**

- ◆ Proposed Distribution Station
- Proposed 138kV Transmission
- 2022 Substation Circle

**Existing Locations**

- ◆ Existing Distribution Substation
- Existing 69kV Transmission
- Existing 138kV Transmission
- Existing 230kV Transmission
- Existing 500kV Transmission
- Public Land

Substation 18

45

Dooley Ln

W Locust Ln

Burke Ln

Tio Ln

W Lewis Ln

Deer Flat Rd

Scism Rd

Scism Rd

12th Ave Rd

Meadowbrook Dr

Sunnyridge Rd

S Powerline Rd

S Mon

S Pioneer Ln

S York Ave

S Stonehedge Dr

S Avondale Ave

S Fork Ave

Alma Ln

E Sparks Ave

E Lewis Ln

E Locust Ln

E York Ave

Osborne Park

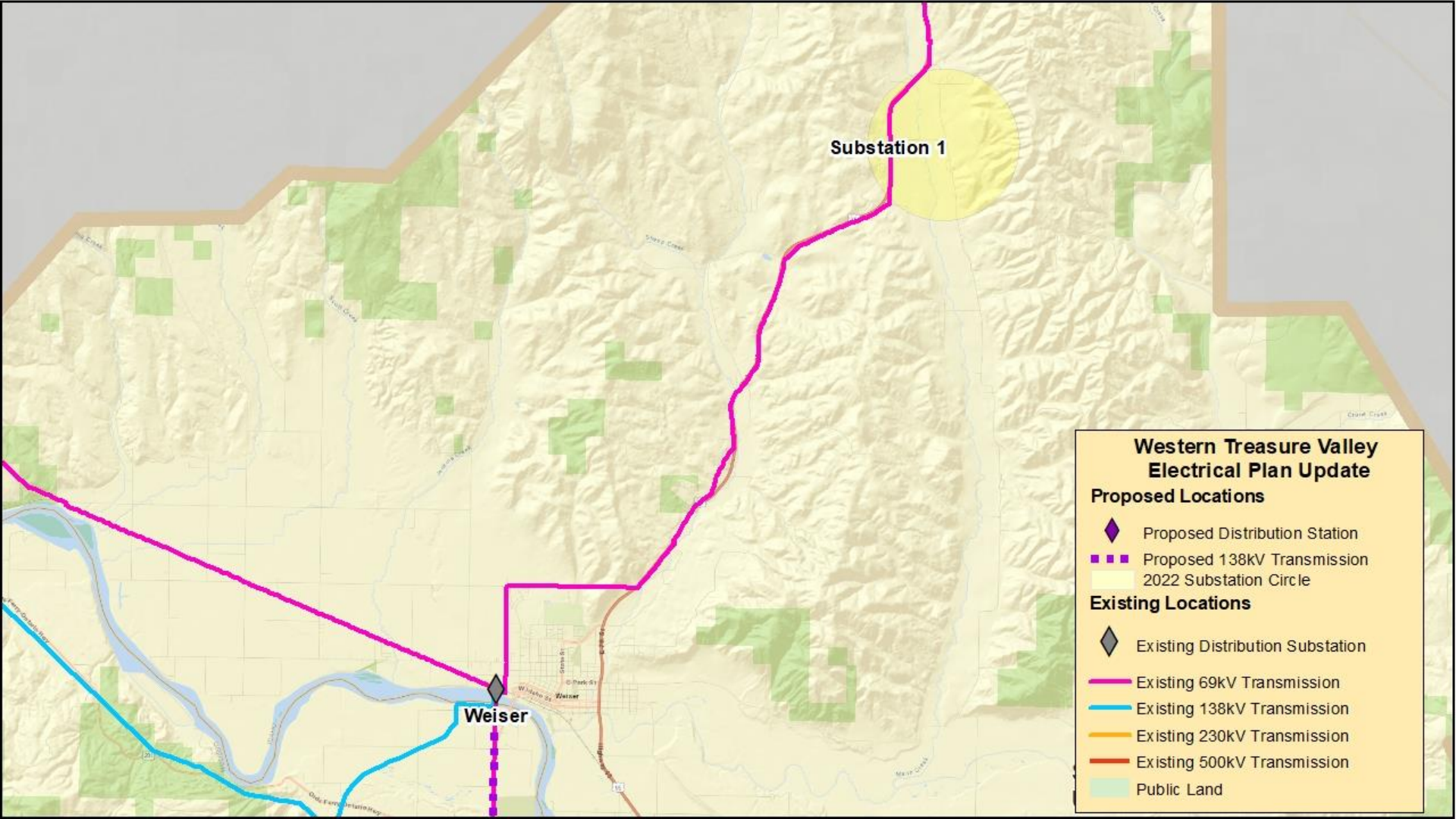
Wilson Creek Park

Public Land



# Mapping Step 4

- Propose sites for new **distribution substations**
  - Thirteen substation circles to identify preferred locations.



Substation 1

Weiser

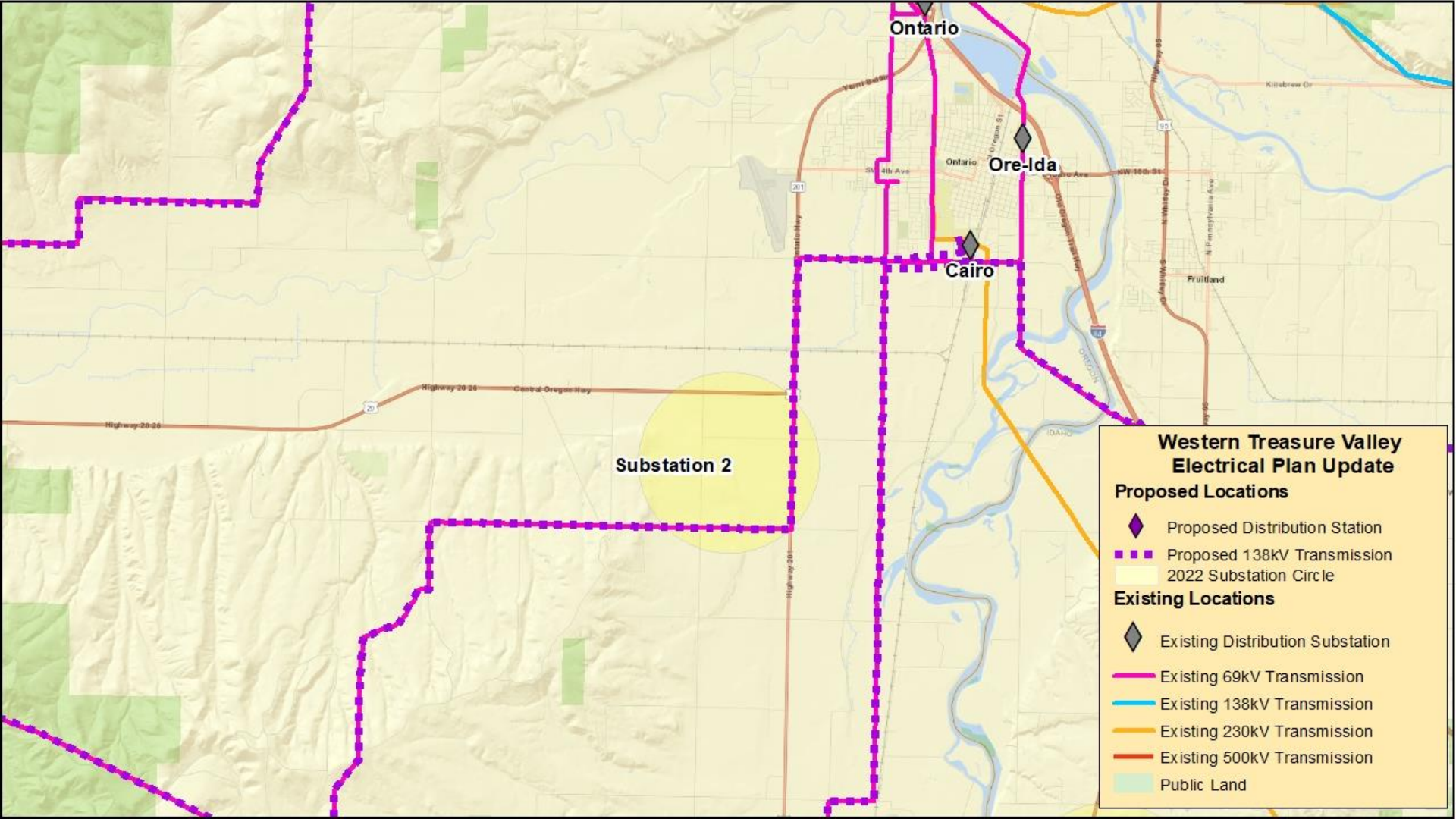
**Western Treasure Valley  
Electrical Plan Update**

**Proposed Locations**

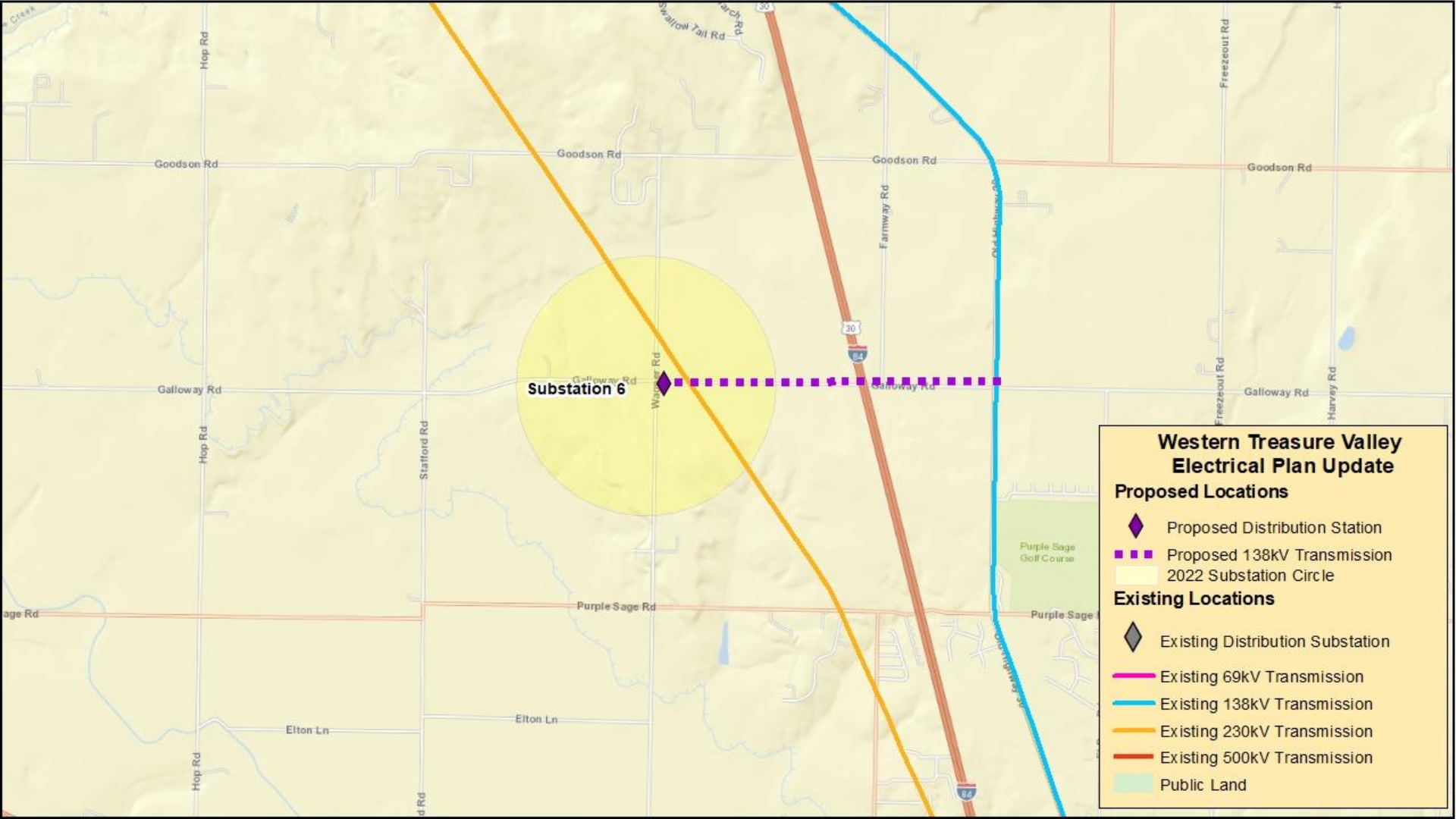
- ◆ Proposed Distribution Station
- Proposed 138kV Transmission
- 2022 Substation Circle

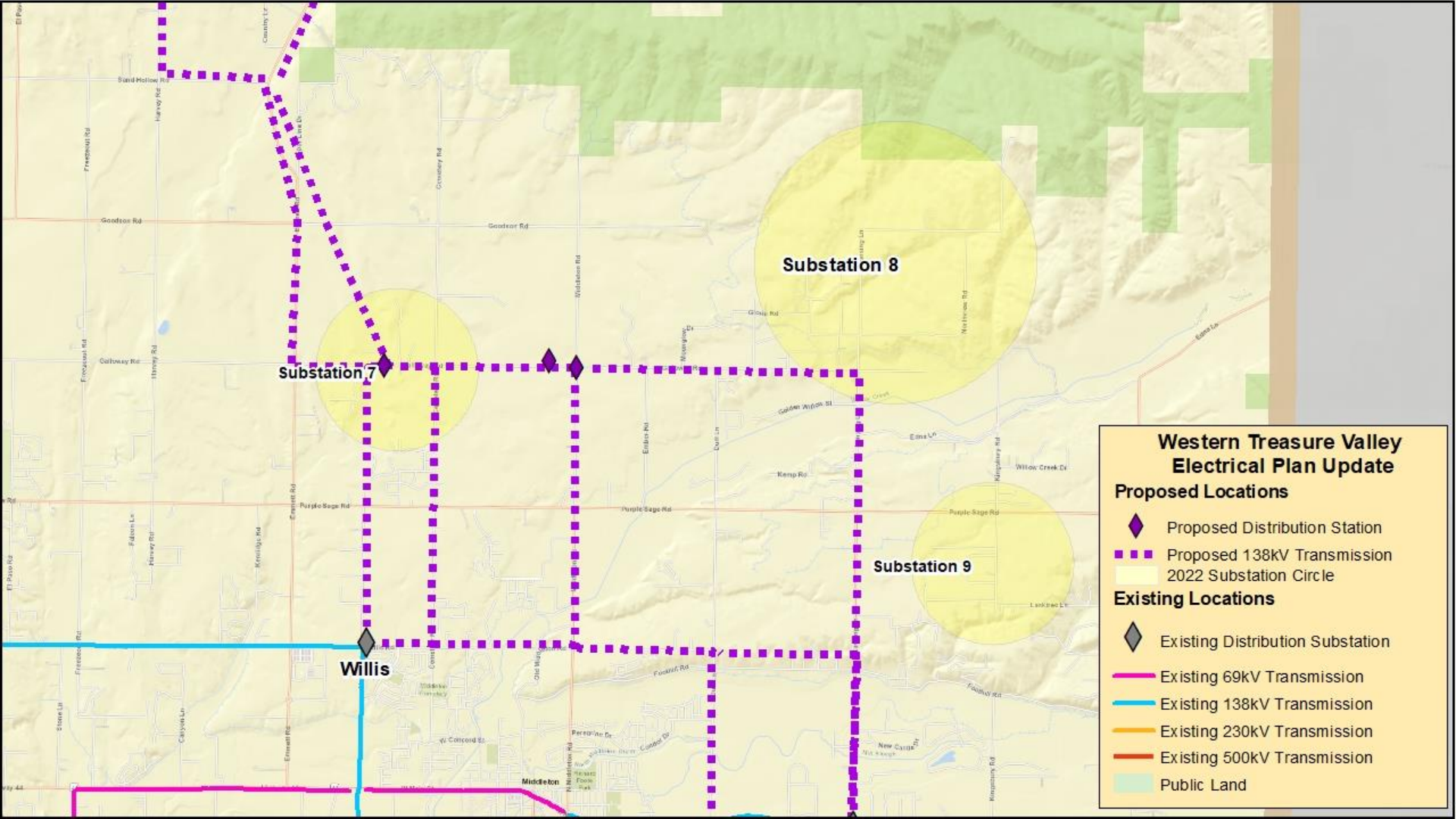
**Existing Locations**

- ◆ Existing Distribution Substation
- Existing 69kV Transmission
- Existing 138kV Transmission
- Existing 230kV Transmission
- Existing 500kV Transmission
- Public Land

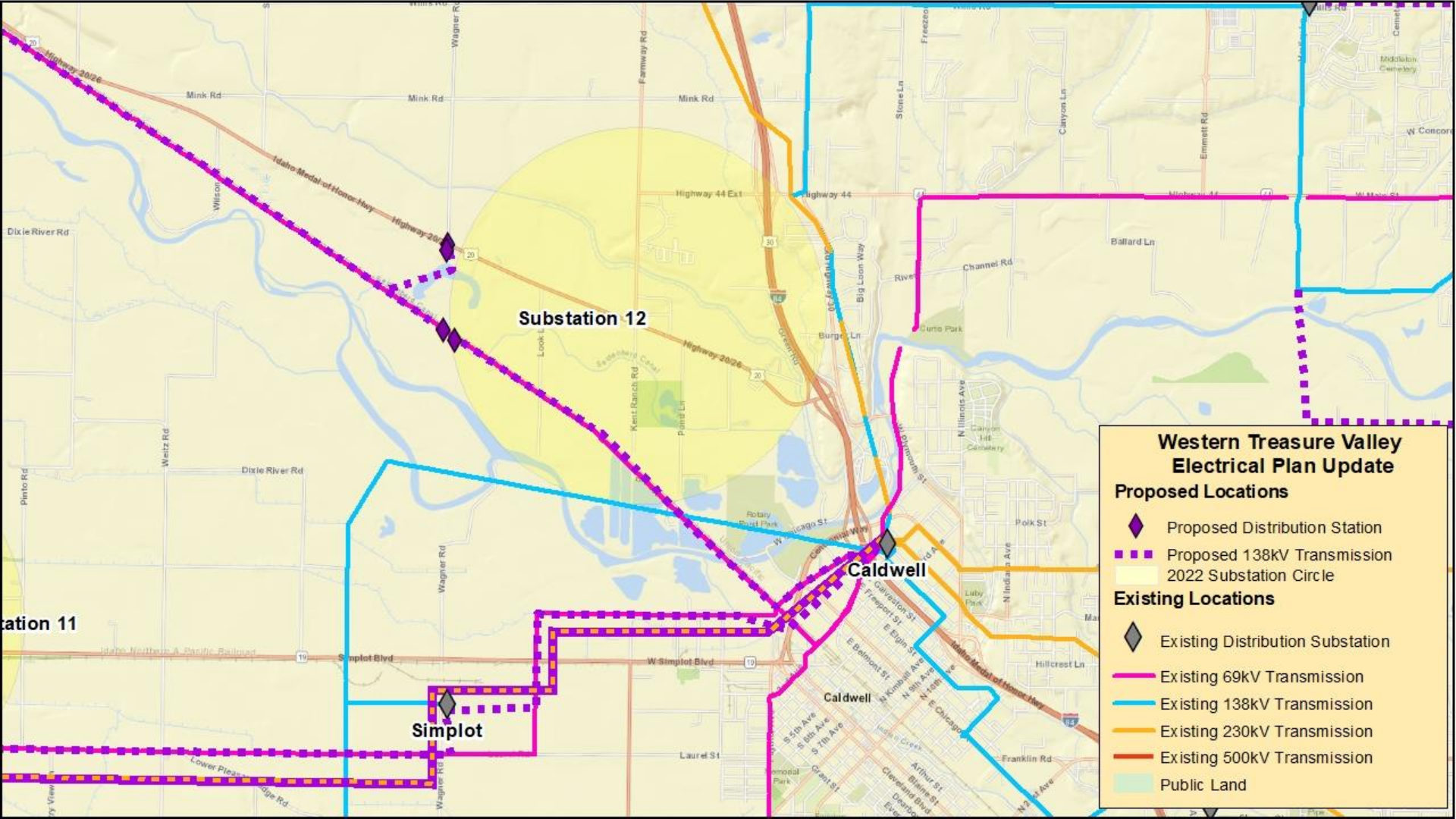












### Western Treasure Valley Electrical Plan Update

**Proposed Locations**

- ◆ Proposed Distribution Station
- ▬ Proposed 138kV Transmission
- 2022 Substation Circle

**Existing Locations**

- ◆ Existing Distribution Substation
- ▬ Existing 69kV Transmission
- ▬ Existing 138kV Transmission
- ▬ Existing 230kV Transmission
- ▬ Existing 500kV Transmission
- ▭ Public Land

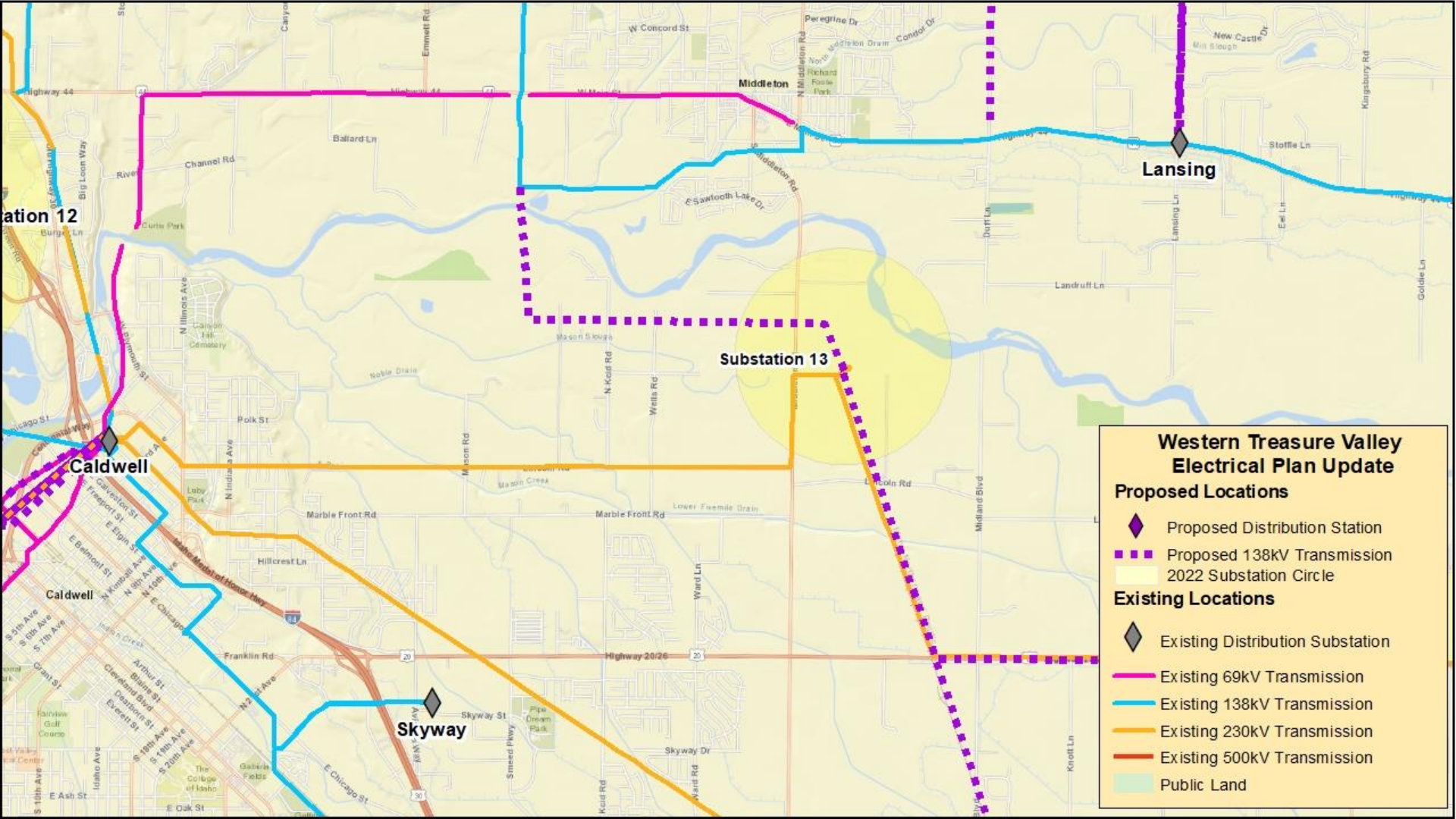
Substation 12

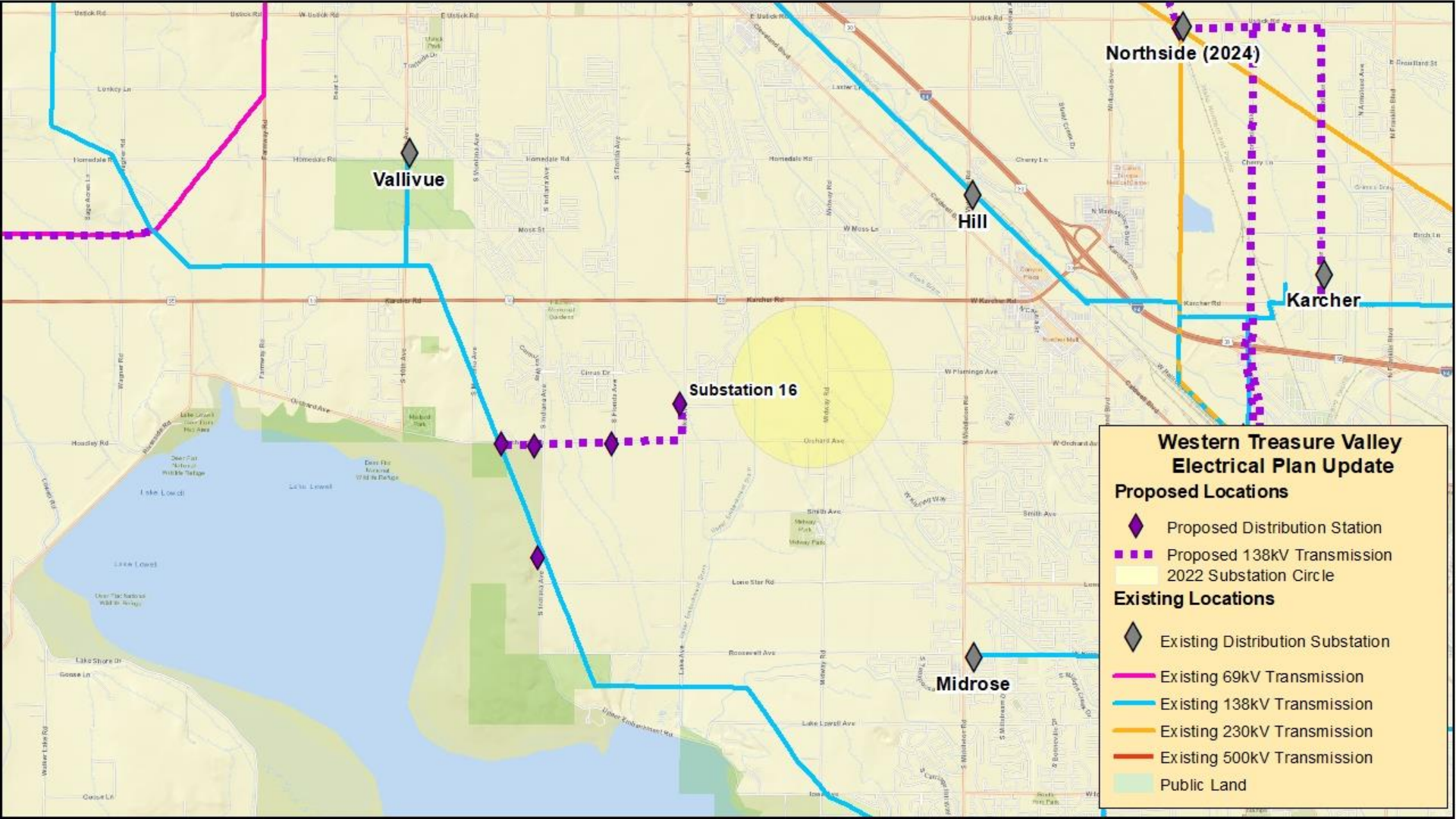
Caldwell

Simplot

Substation 11







### Western Treasure Valley Electrical Plan Update

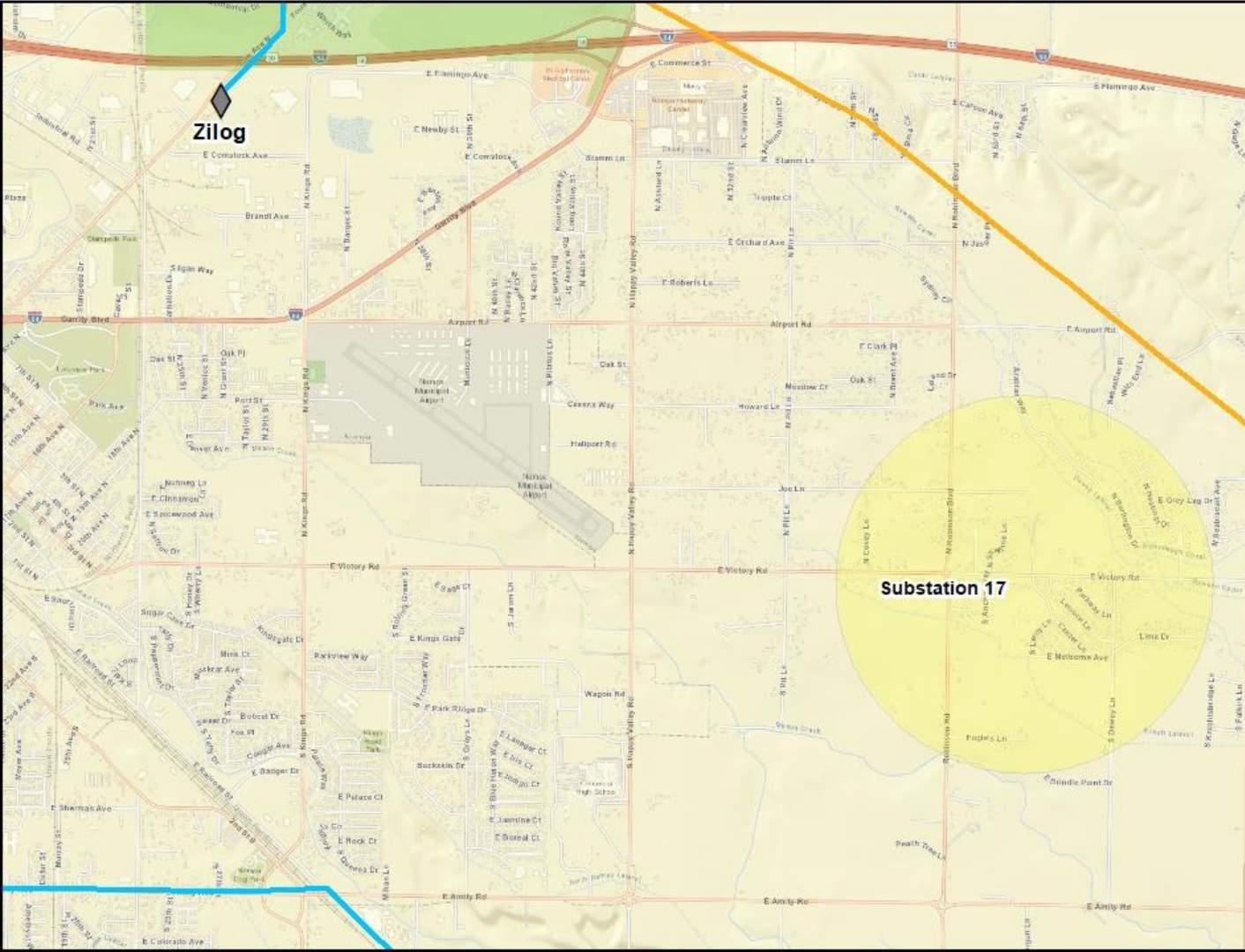
**Proposed Locations**

- ◆ Proposed Distribution Station
- Proposed 138kV Transmission
- 2022 Substation Circle

**Existing Locations**

- ◆ Existing Distribution Substation
- Existing 69kV Transmission
- Existing 138kV Transmission
- Existing 230kV Transmission
- Existing 500kV Transmission
- Public Land





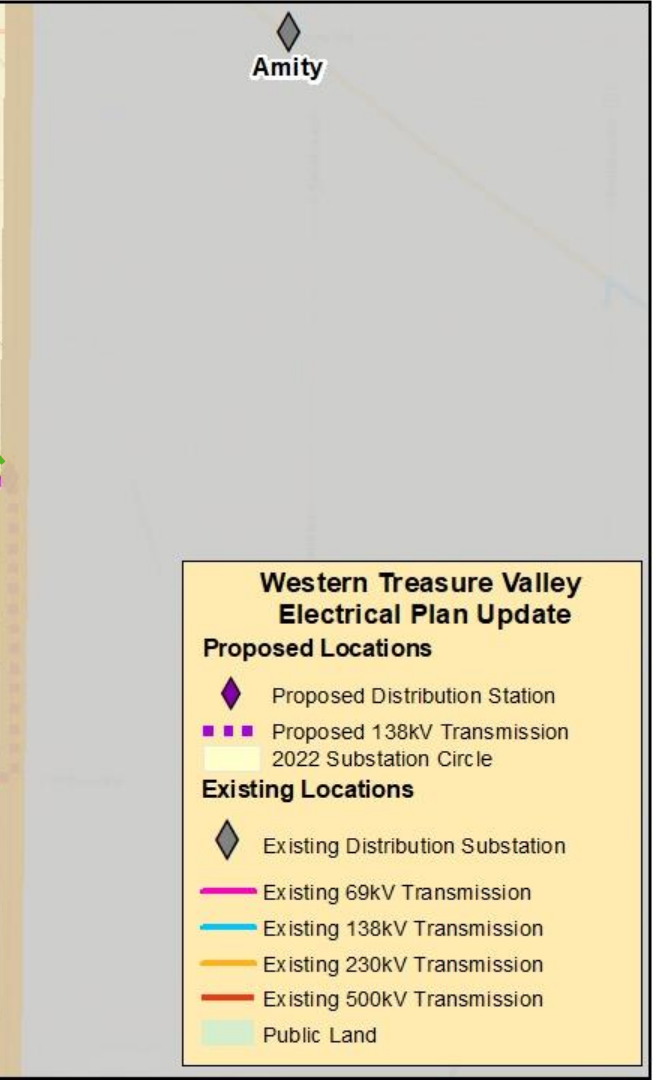
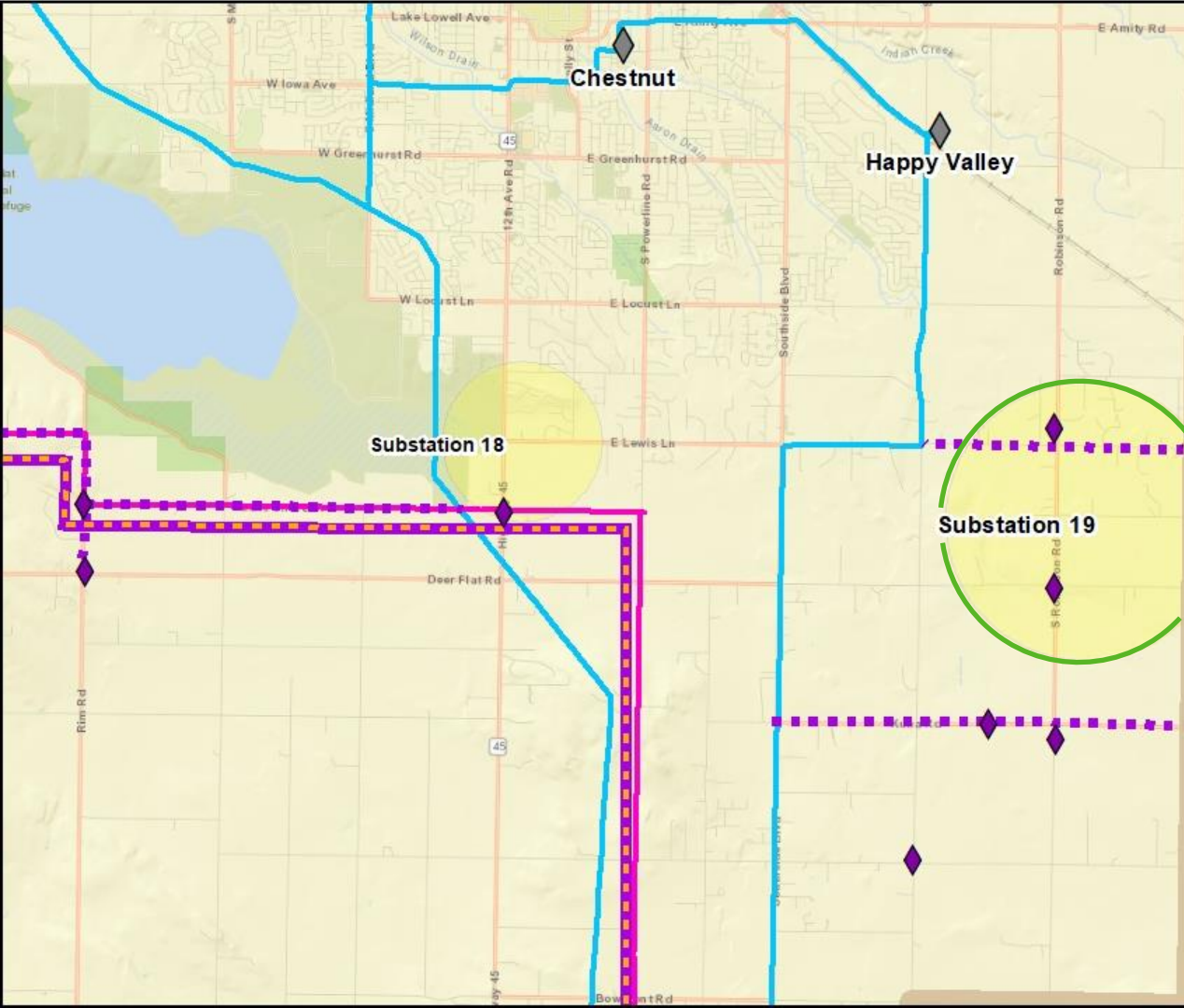
### Western Treasure Valley Electrical Plan Update

**Proposed Locations**

- ◆ Proposed Distribution Station
- Proposed 138kV Transmission
- 2022 Substation Circle

**Existing Locations**

- ◆ Existing Distribution Substation
- Existing 69kV Transmission
- Existing 138kV Transmission
- Existing 230kV Transmission
- Existing 500kV Transmission
- Public Land



### Western Treasure Valley Electrical Plan Update

**Proposed Locations**

- ◆ Proposed Distribution Station
- - - Proposed 138kV Transmission
- 2022 Substation Circle

**Existing Locations**

- ◆ Existing Distribution Substation
- Existing 69kV Transmission
- Existing 138kV Transmission
- Existing 230kV Transmission
- Existing 500kV Transmission
- Public Land

## Mapping Step 5

- Confirm or propose **138 kV transmission line routes** connecting distribution substations to either a source substation or another distribution substation.



# Western Treasure Valley Electrical Plan Update

## Next Steps

Jim Burdick  
Engineering Leader  
Idaho Power

