

# Project Fact Sheet

## Bowmont to Hubbard 230-kilovolt Line Upgrade

Idaho Power plans to upgrade the existing Bowmont to Hubbard transmission line across the southern Treasure Valley. These upgrades will connect Idaho Power's Bowmont substation south of Nampa to the Hubbard substation south of Boise and deliver additional reliable, affordable, clean energy to customers across the region.

### Project Need

Today, the major electricity corridors in the Treasure Valley cross the north and central parts of the valley. The Bowmont to Hubbard upgrade will increase available electricity in the southern part of the Treasure Valley.

The project will increase the amount of available power, reduce the risk of outages and provide an additional connection for customers. The upgraded Bowmont to Hubbard line will also bring more energy into the region from the Boardman to Hemingway (B2H) project, scheduled for completion in 2026 or later.

### Coordination

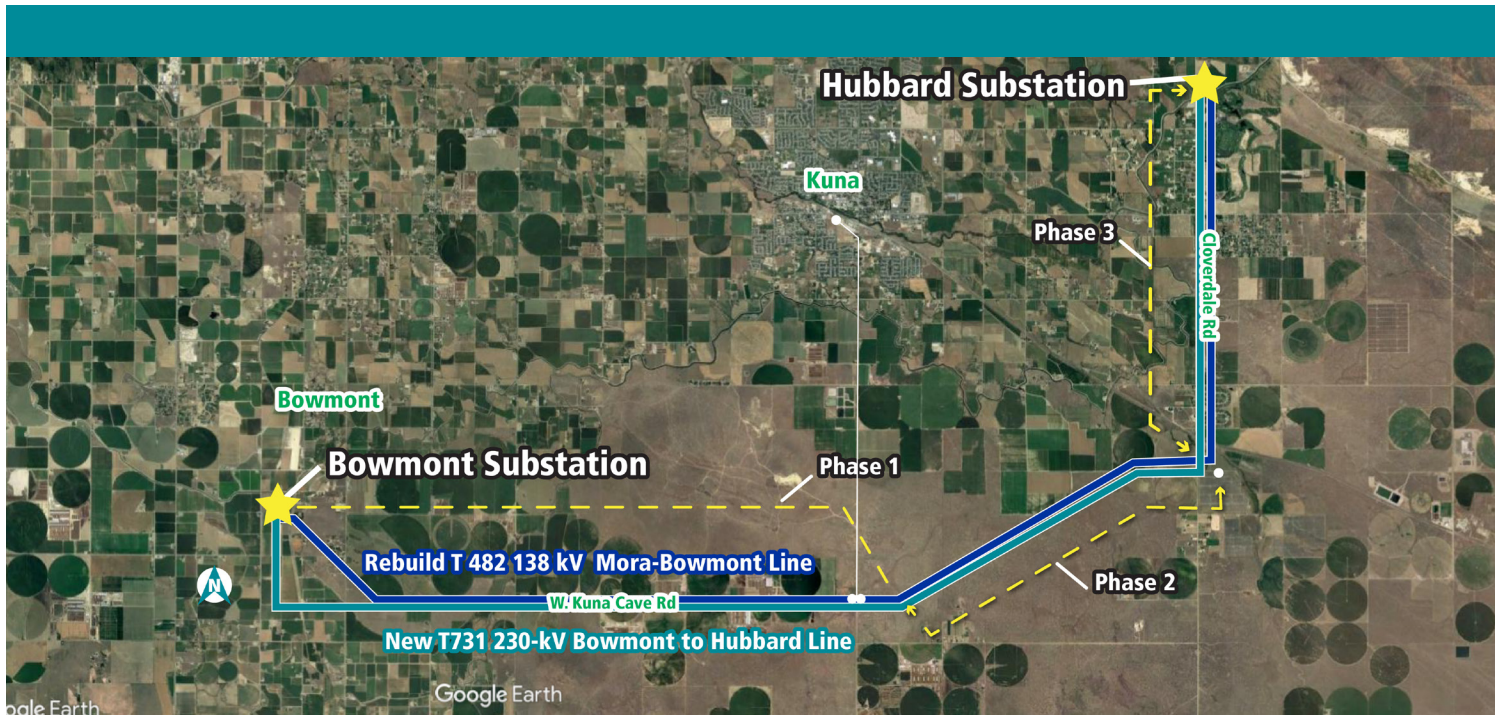
Idaho Power is committed to working with neighbors, community leaders and other stakeholders across Ada and Canyon Counties throughout this project, with a special focus on stakeholders in Kuna. We'll host a public meeting and offer

other engagement opportunities as we move closer to construction of this important transmission line upgrade.

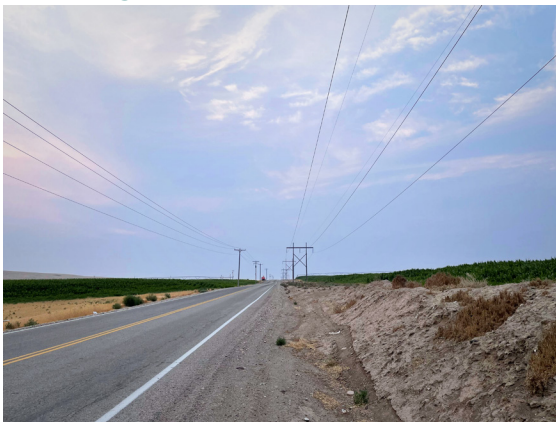
Idaho Power will build the line in phases to reduce cost and disruptions to customers' service.

### Line Details

- **Line length:** 16 miles
- **Pole type:** tubular steel poles
- **Pole height:** typically 120 feet, depending on terrain
- **Pole spacing:** 600 feet
- A combination of existing easements, public-right-of-way, and new easements may be required
- **Construction time:** 2023 – 2026. Completed in three phases.



## Existing



## Proposed



## Project Schedule



## Contact the Project Team

Idaho Power  
 Jeff Maffuccio | [jmaffuccio@idahopower.com](mailto:jmaffuccio@idahopower.com)  
 (208) 388-2402

