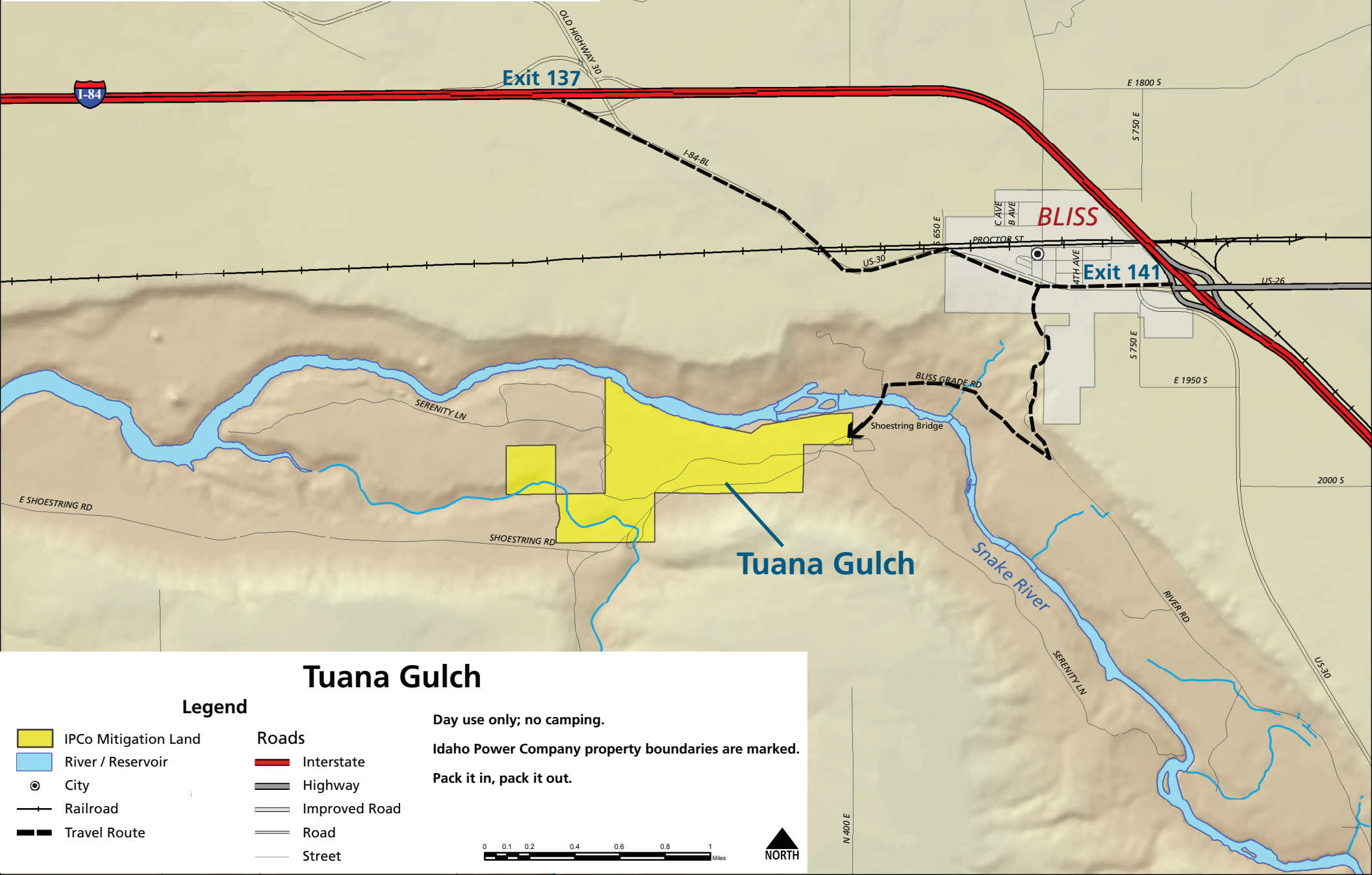
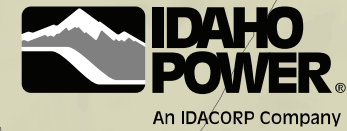


Driving Directions: From Interstate 84 take exit 137 at Bliss and drive southeast towards Bliss. Turn right on River Road and drive 1.1 miles down winding grade into the Hagerman Valley. Turn right onto Bliss Grade Road and drive 1.0 mile. Cross the Snake River on Bliss/Shoestring Bridge and continue uphill another 0.5 miles. Turn right before crossing the bridge over the decommissioned King Hill Canal and drive adjacent to the canal approx. 0.25 miles. Visitors can park along the canal road to access day use only (no camping) areas of Tuana Gulch. Areas behind the fences are designated foot access only. Fenced areas are accessible using walk-over and walk-through stiles.



Tuana Gulch

Legend

- | | |
|----------------------|---------------|
| IPCo Mitigation Land | Roads |
| River / Reservoir | Interstate |
| City | Highway |
| Railroad | Improved Road |
| Travel Route | Road |
| | Street |

Day use only; no camping.

Idaho Power Company property boundaries are marked.

Pack it in, pack it out.

